



Crestline Ford - CCL 150 Tall Roof

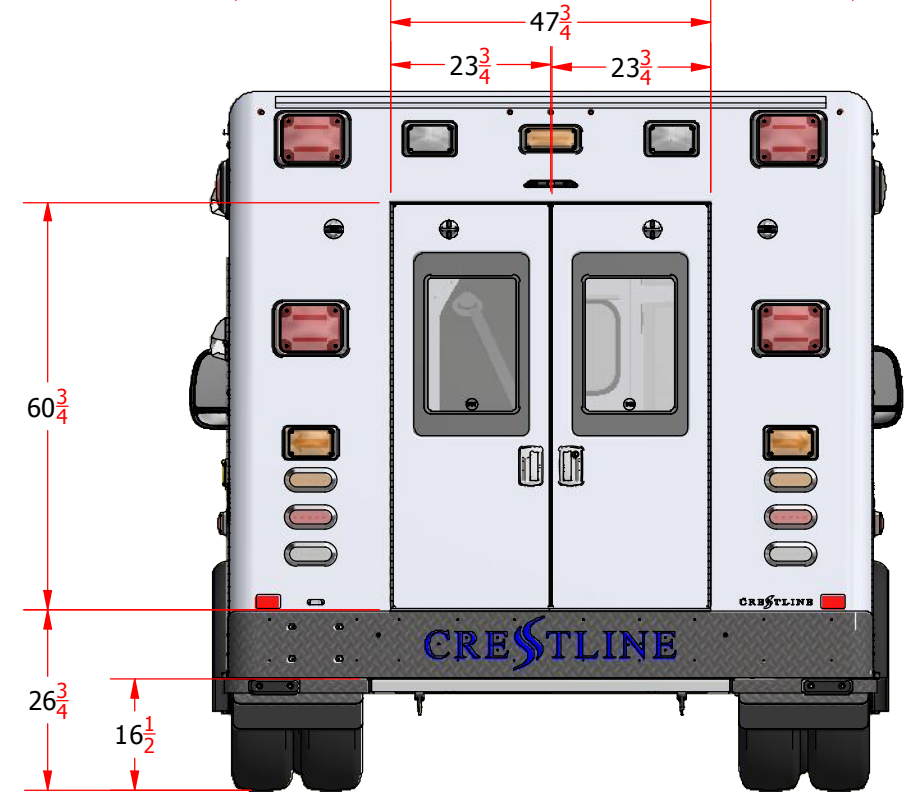
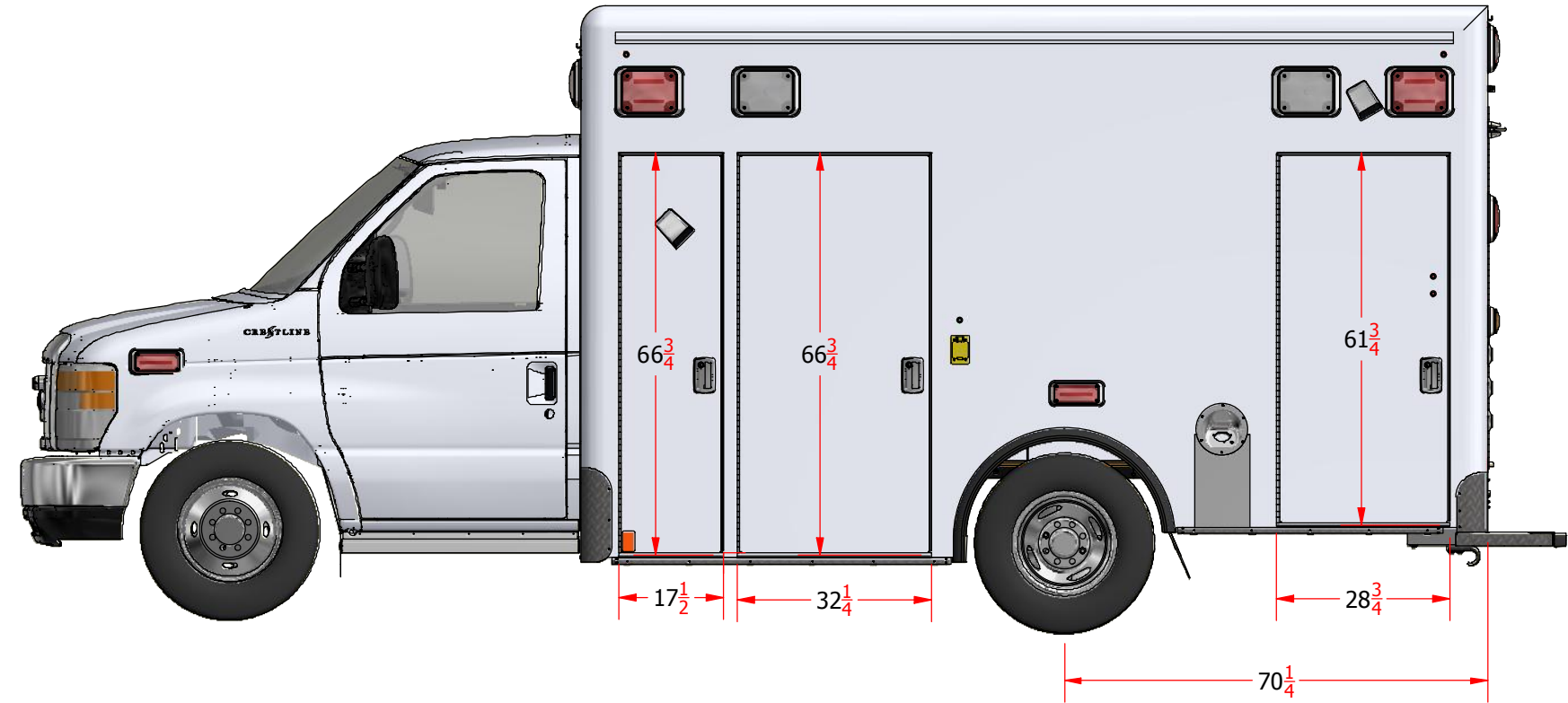
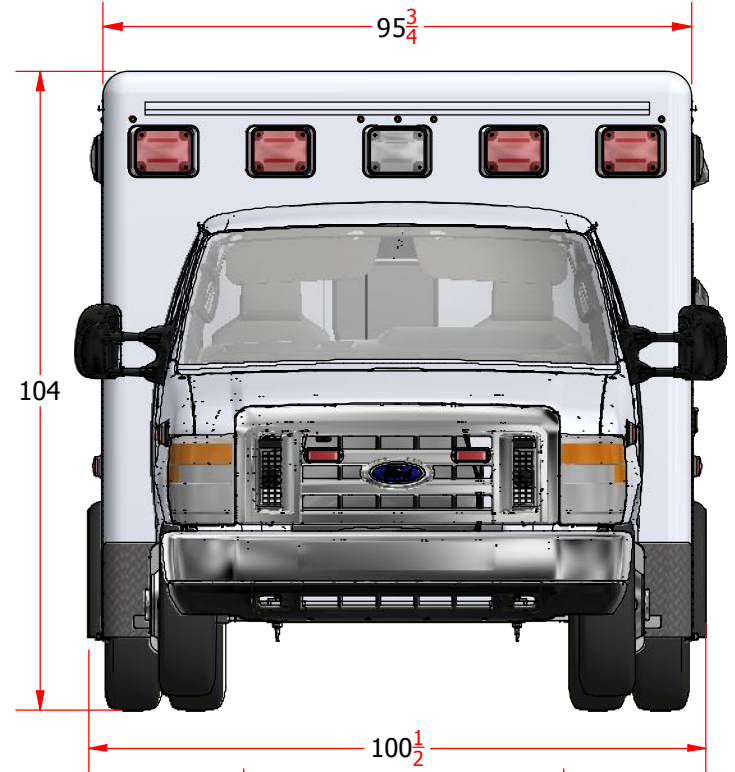
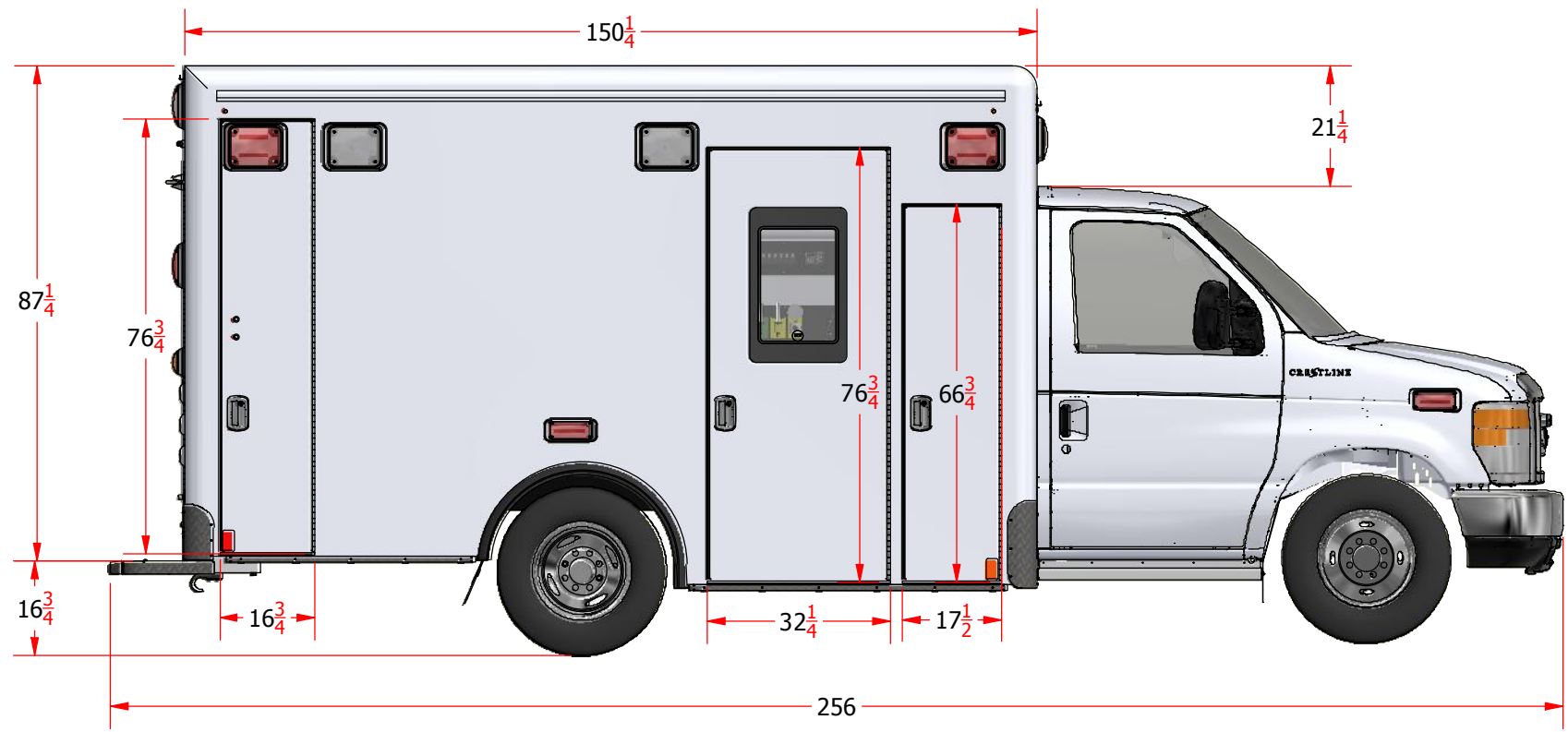
ALL INFORMATION SHOWN IS SUBJECT TO CHANGE. FOR REPRESENTATIVE OR VISUAL PURPOSES ONLY. NOT INTENDED TO BE USED AS A MANUFACTURING DRAWING.			
ALL INFORMATION ON THIS DRAWING IS CONFIDENTIAL. ALL COPIES OF THIS DOCUMENT MUST BE RETURNED OR DESTROYED UPON REQUEST BY CRESTLINE COACH.			
DATE:	VIEW:	CRESTLINE	
MODEL:	CCL 150	DESCRIPTION:	CCL 150 TALL ROOF, FORD E-350 138"WB
PAGE:	CUSTOMER:	REV	FILENAME:
1 OF 22		0	AMB2020009



ALL INFORMATION SHOWN IS SUBJECT TO CHANGE. FOR REPRESENTATIVE OR VISUAL PURPOSES ONLY. NOT INTENDED TO BE USED AS A MANUFACTURING DRAWING.

ALL INFORMATION ON THIS DRAWING IS CONFIDENTIAL. ALL COPIES OF THIS DOCUMENT MUST BE RETURNED OR DESTROYED UPON REQUEST BY CRESTLINE COACH.

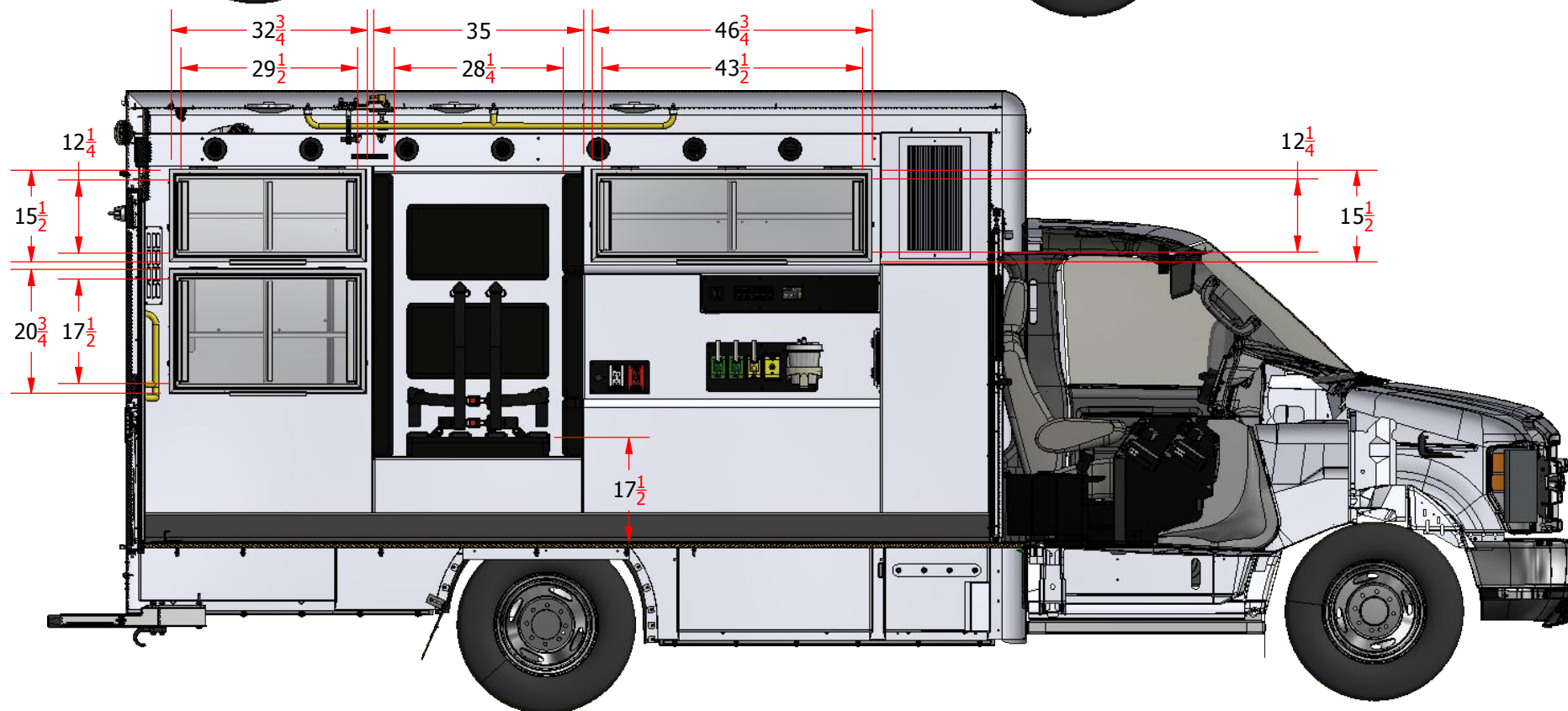
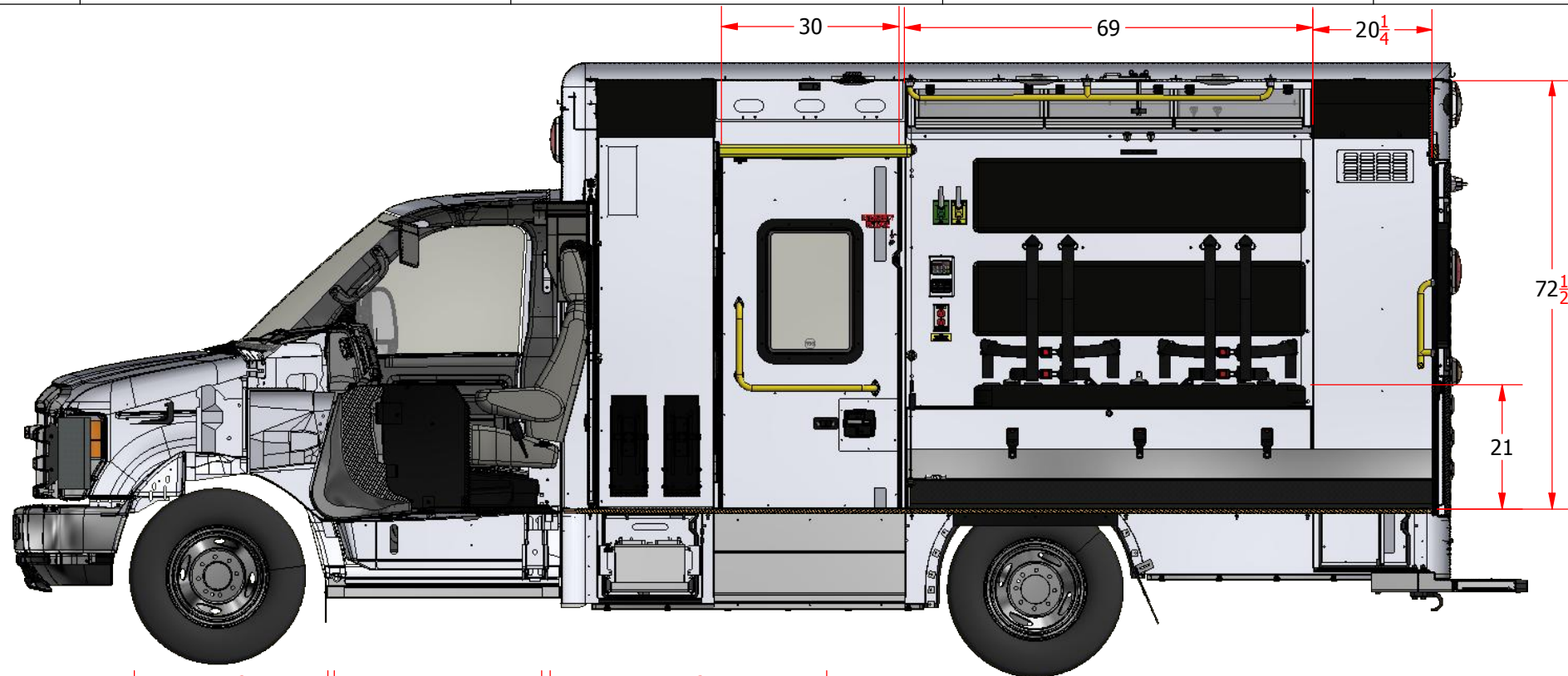
DATE:	VIEW:	CRESTLINE	
MODEL:	CCL 150	DESCRIPTION:	CCL 150 TALL ROOF, FORD E-350 138"WB
PAGE:	CUSTOMER:	REV	FILENAME:
2 OF 22		0	AMB2020009



ALL INFORMATION SHOWN IS SUBJECT TO CHANGE. FOR REPRESENTATIVE OR VISUAL PURPOSES ONLY. NOT INTENDED TO BE USED AS A MANUFACTURING DRAWING.

ALL INFORMATION ON THIS DRAWING IS CONFIDENTIAL. ALL COPIES OF THIS DOCUMENT MUST BE RETURNED OR DESTROYED UPON REQUEST BY CRESTLINE COACH.

DATE:	VIEW:	CRESTLINE	
MODEL:	CCL 150	DESCRIPTION:	CCL 150 TALL ROOF, FORD E-350 138"WB
PAGE:	3 OF 22	CUSTOMER:	REV 0 FILENAME: AMB2020009



ALL INFORMATION SHOWN IS SUBJECT TO CHANGE. FOR REPRESENTATIVE OR VISUAL PURPOSES ONLY. NOT INTENDED TO BE USED AS A MANUFACTURING DRAWING.			
ALL INFORMATION ON THIS DRAWING IS CONFIDENTIAL. ALL COPIES OF THIS DOCUMENT MUST BE RETURNED OR DESTROYED UPON REQUEST BY CRESTLINE COACH.			
DATE:	VIEW:	internal imp dimensions	CRESTLINE
MODEL:	CCL 150	DESCRIPTION:	CCL 150 TALL ROOF, FORD E-350 138"WB
PAGE:	CUSTOMER:	REV	FILENAME:
4 OF 22		0	AMB2020009

A

B

C

D

E

F

4

3

2

1

4

3

2

1

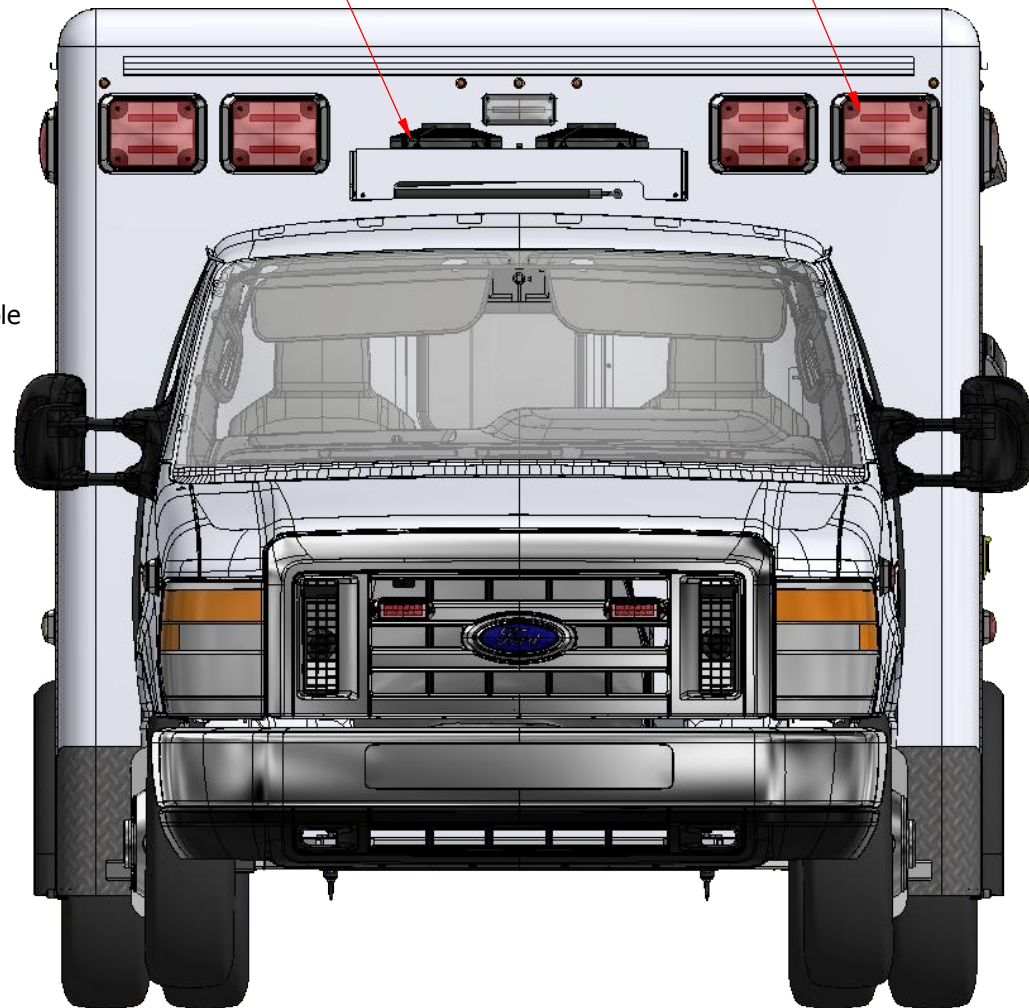
Front 5 emergency light configuration (shown)
 (Optional 7 light configuration available
 5 x 900 series (R/R/W/R/R) (Shown)
 7 x 900 series (R/R/R/W/R/R/R) (Optional)
 (Optional chrome flanges available)-shown

Front 5 emergency light configuration with Condenser (shown)
 4 x 900 series ; 1 x 700 series
 R/R/W/R/R (Shown)
 (Optional chrome flanges available)

(Optional condenser-shown)

FORD OEM mirrors standard
 Optional VELVAC heated mirror available

(2) Interior heights available
 68" (Optional)
 72" (Shown)



ALL INFORMATION SHOWN IS SUBJECT TO CHANGE. FOR REPRESENTATIVE OR VISUAL PURPOSES ONLY. NOT INTENDED TO BE USED AS A MANUFACTURING DRAWING.

ALL INFORMATION ON THIS DRAWING IS CONFIDENTIAL. ALL COPIES OF THIS DOCUMENT MUST BE RETURNED OR DESTROYED UPON REQUEST BY CRESTLINE COACH.

DATE:	VIEW:	CRESTLINE	
MODEL:	CCL 150	DESCRIPTION:	CCL 150 TALL ROOF, FORD E-350 138"WB
PAGE:	5 OF 22	CUSTOMER:	REV 0 FILENAME: AMB2020009

A

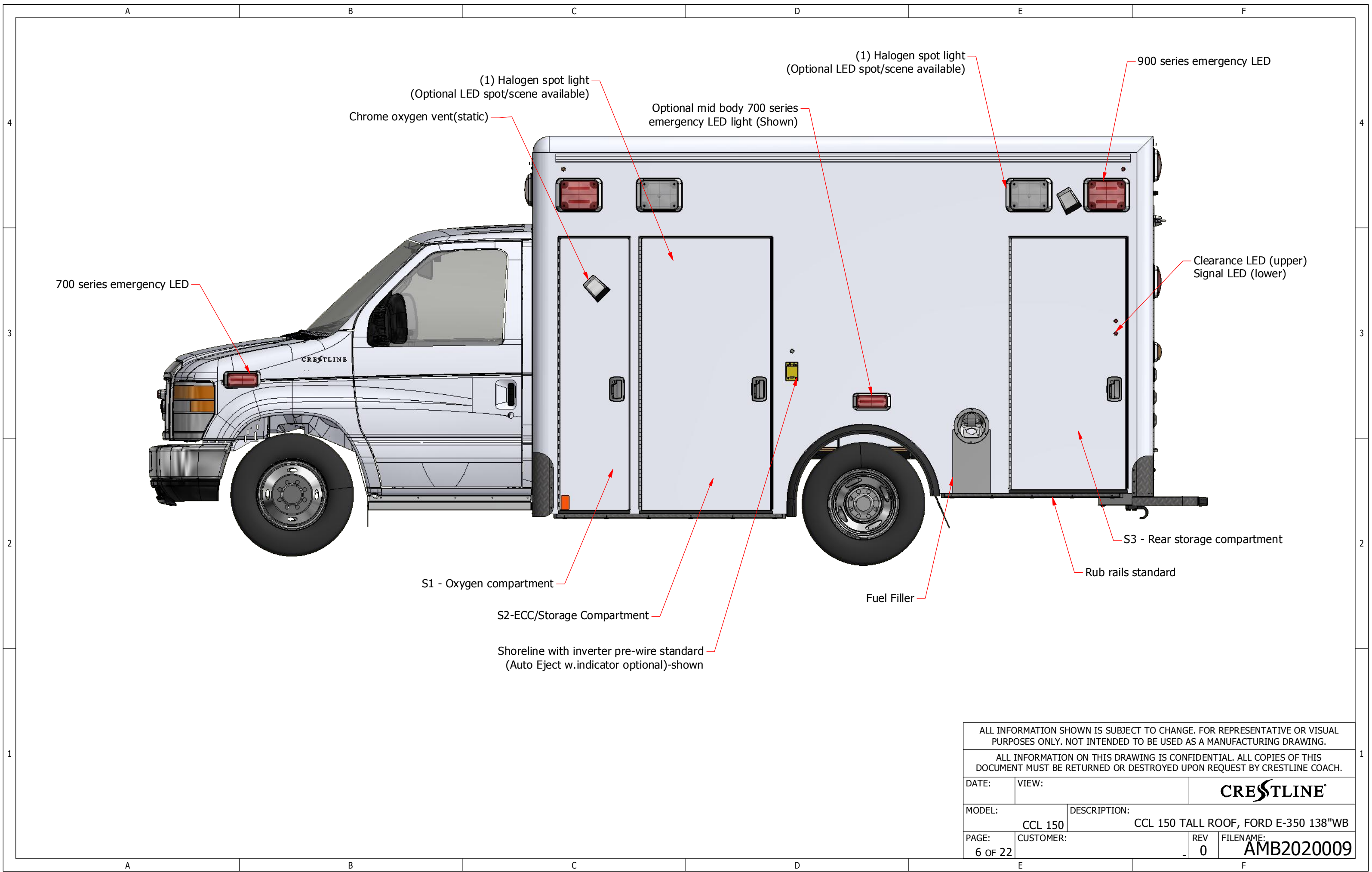
B

C

D

E

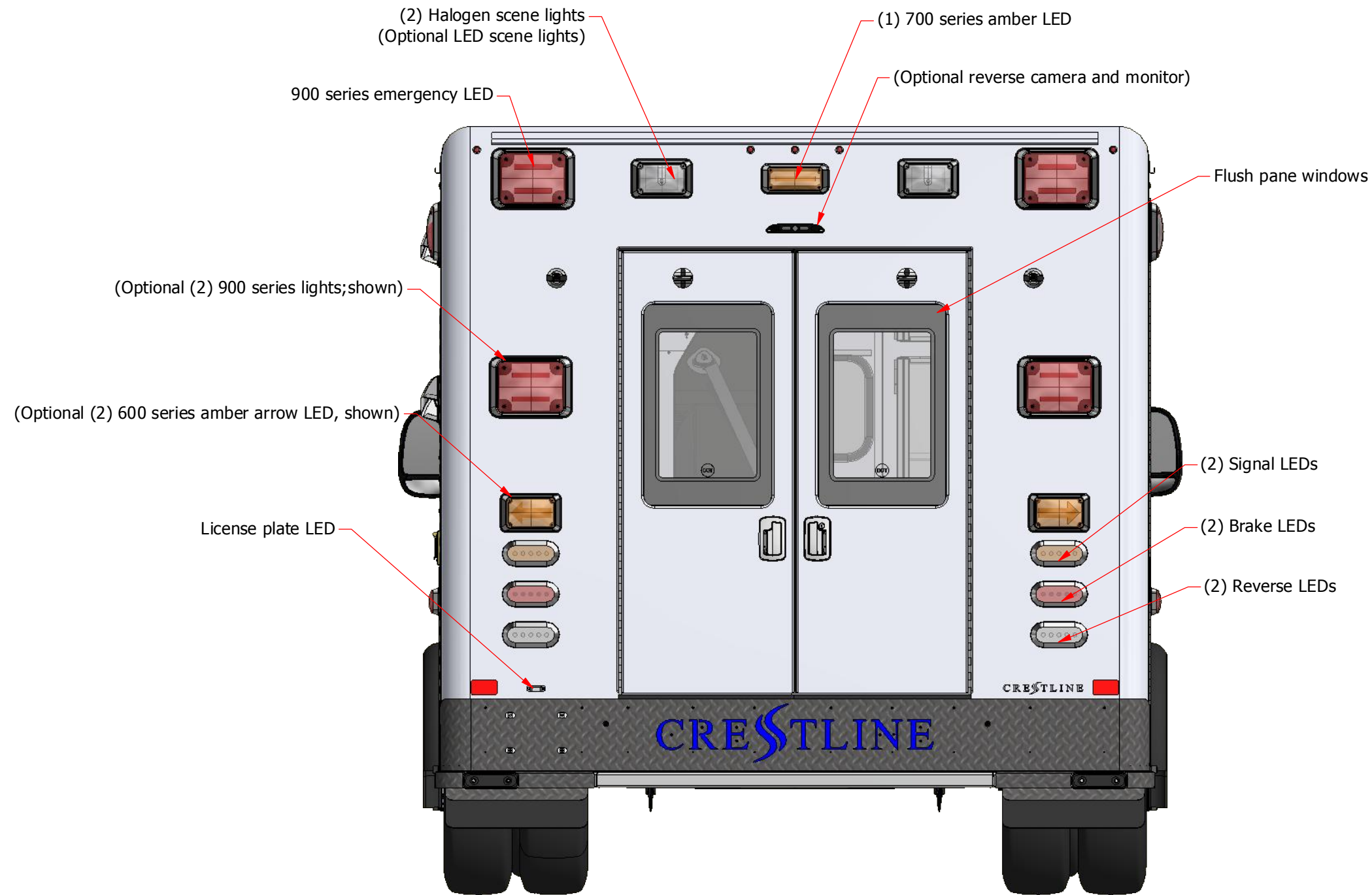
F



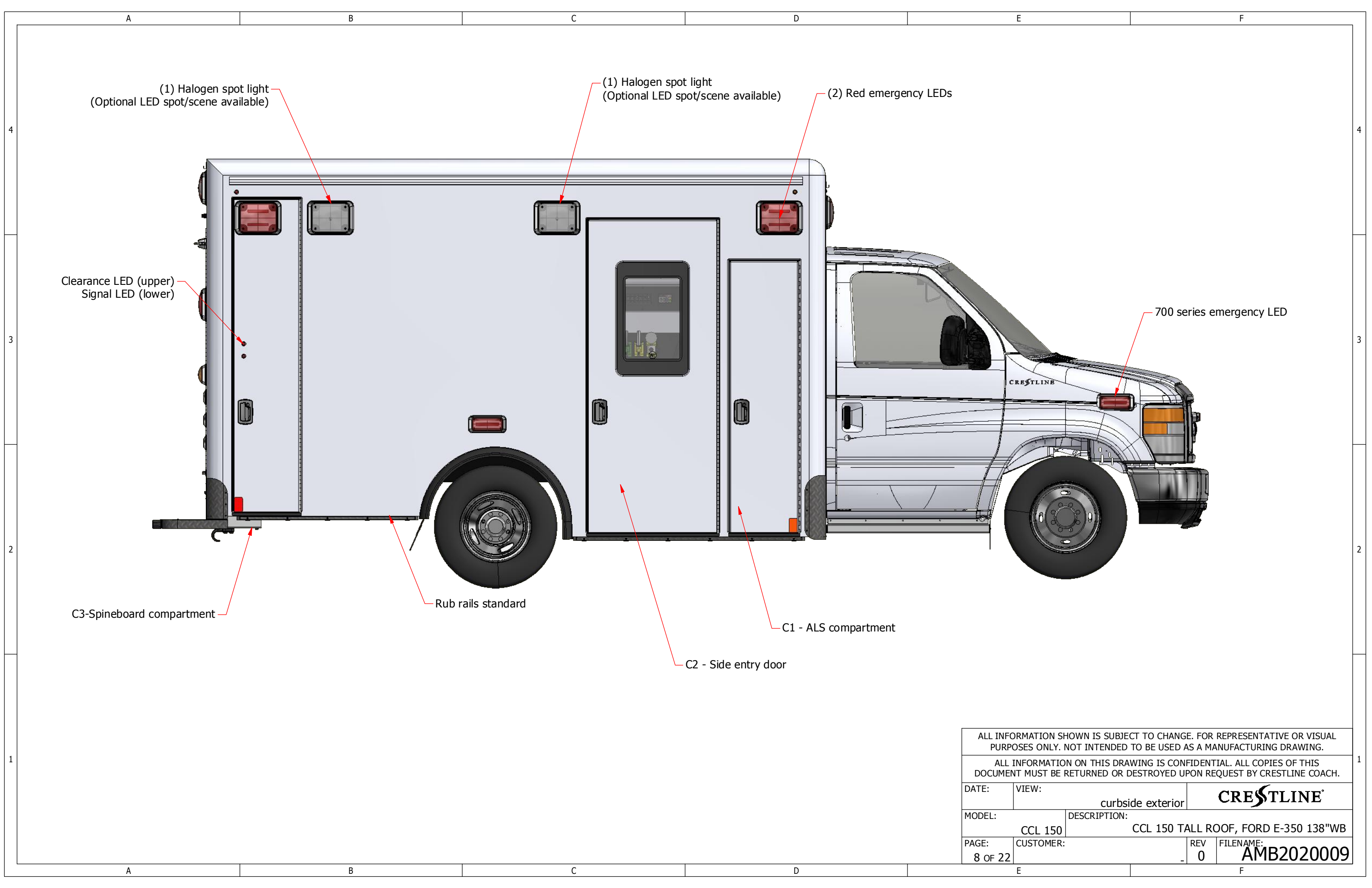
ALL INFORMATION SHOWN IS SUBJECT TO CHANGE. FOR REPRESENTATIVE OR VISUAL PURPOSES ONLY. NOT INTENDED TO BE USED AS A MANUFACTURING DRAWING.

ALL INFORMATION ON THIS DRAWING IS CONFIDENTIAL. ALL COPIES OF THIS DOCUMENT MUST BE RETURNED OR DESTROYED UPON REQUEST BY CRESTLINE COACH.

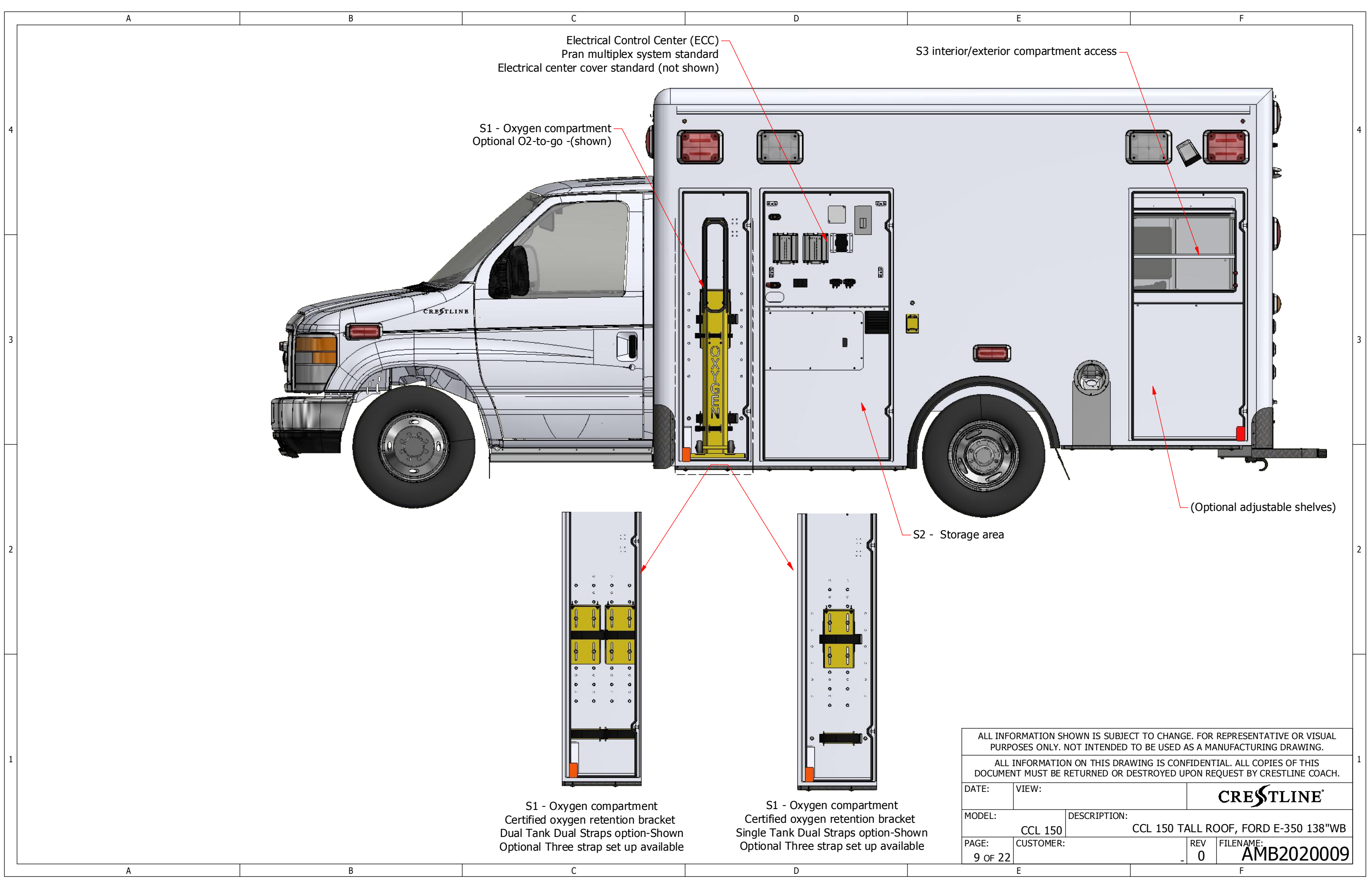
DATE:	VIEW:	CRESTLINE	
MODEL:	CCL 150	DESCRIPTION:	CCL 150 TALL ROOF, FORD E-350 138"WB
PAGE:	6 OF 22	CUSTOMER:	REV 0 FILENAME: AMB2020009



ALL INFORMATION SHOWN IS SUBJECT TO CHANGE. FOR REPRESENTATIVE OR VISUAL PURPOSES ONLY. NOT INTENDED TO BE USED AS A MANUFACTURING DRAWING.			
ALL INFORMATION ON THIS DRAWING IS CONFIDENTIAL. ALL COPIES OF THIS DOCUMENT MUST BE RETURNED OR DESTROYED UPON REQUEST BY CRESTLINE COACH.			
DATE:	VIEW:	CRESTLINE	
MODEL:	CCL 150	DESCRIPTION:	CCL 150 TALL ROOF, FORD E-350 138"WB
PAGE:	CUSTOMER:	REV	FILENAME:
7 OF 22		0	AMB2020009



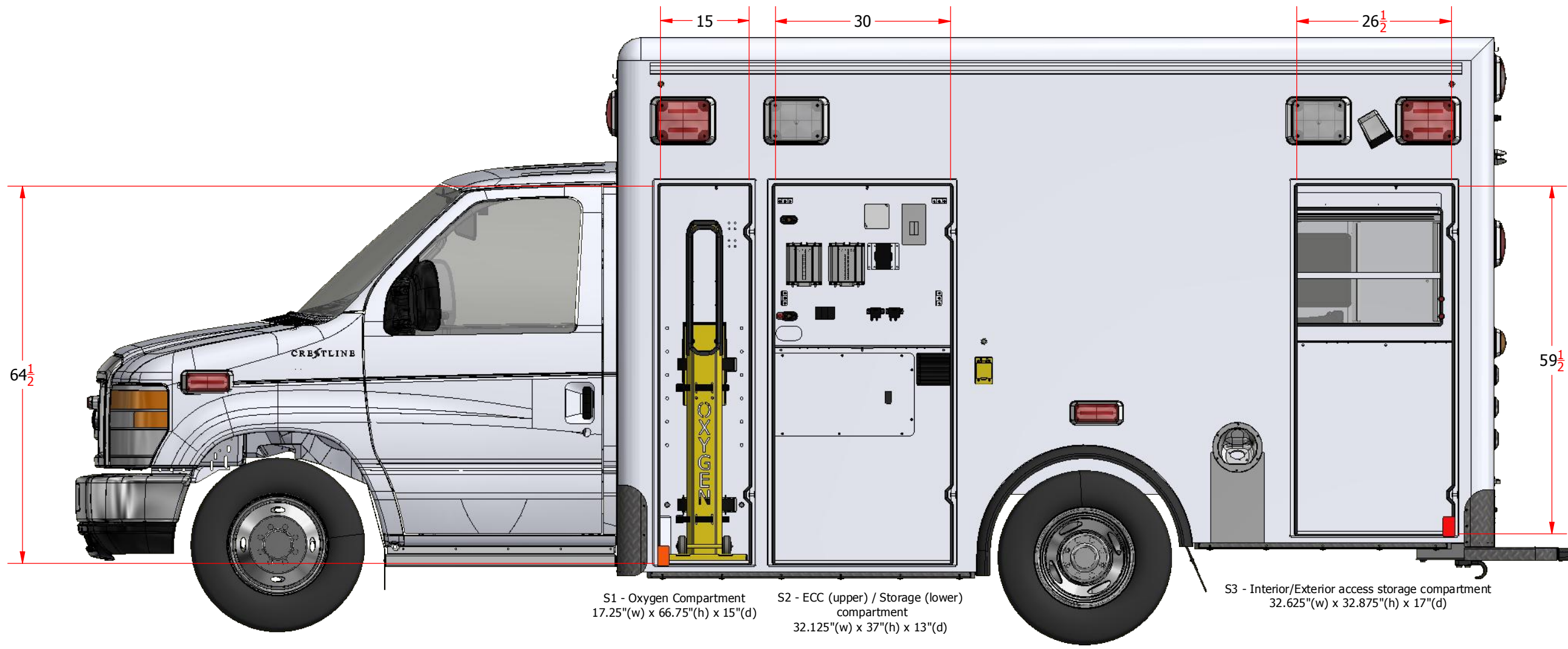
ALL INFORMATION SHOWN IS SUBJECT TO CHANGE. FOR REPRESENTATIVE OR VISUAL PURPOSES ONLY. NOT INTENDED TO BE USED AS A MANUFACTURING DRAWING.			
ALL INFORMATION ON THIS DRAWING IS CONFIDENTIAL. ALL COPIES OF THIS DOCUMENT MUST BE RETURNED OR DESTROYED UPON REQUEST BY CRESTLINE COACH.			
DATE:	VIEW:	curbside exterior	CRESTLINE
MODEL:	CCL 150	DESCRIPTION:	CCL 150 TALL ROOF, FORD E-350 138"WB
PAGE:	8 OF 22	CUSTOMER:	REV 0 FILENAME: AMB2020009



ALL INFORMATION SHOWN IS SUBJECT TO CHANGE. FOR REPRESENTATIVE OR VISUAL PURPOSES ONLY. NOT INTENDED TO BE USED AS A MANUFACTURING DRAWING.

ALL INFORMATION ON THIS DRAWING IS CONFIDENTIAL. ALL COPIES OF THIS DOCUMENT MUST BE RETURNED OR DESTROYED UPON REQUEST BY CRESTLINE COACH.

DATE:	VIEW:	CRESTLINE	
MODEL:	CCL 150	DESCRIPTION:	CCL 150 TALL ROOF, FORD E-350 138"WB
PAGE:	9 OF 22	CUSTOMER:	REV 0 FILENAME: AMB2020009



S1 - Oxygen Compartment
17.25"(w) x 66.75"(h) x 15"(d)

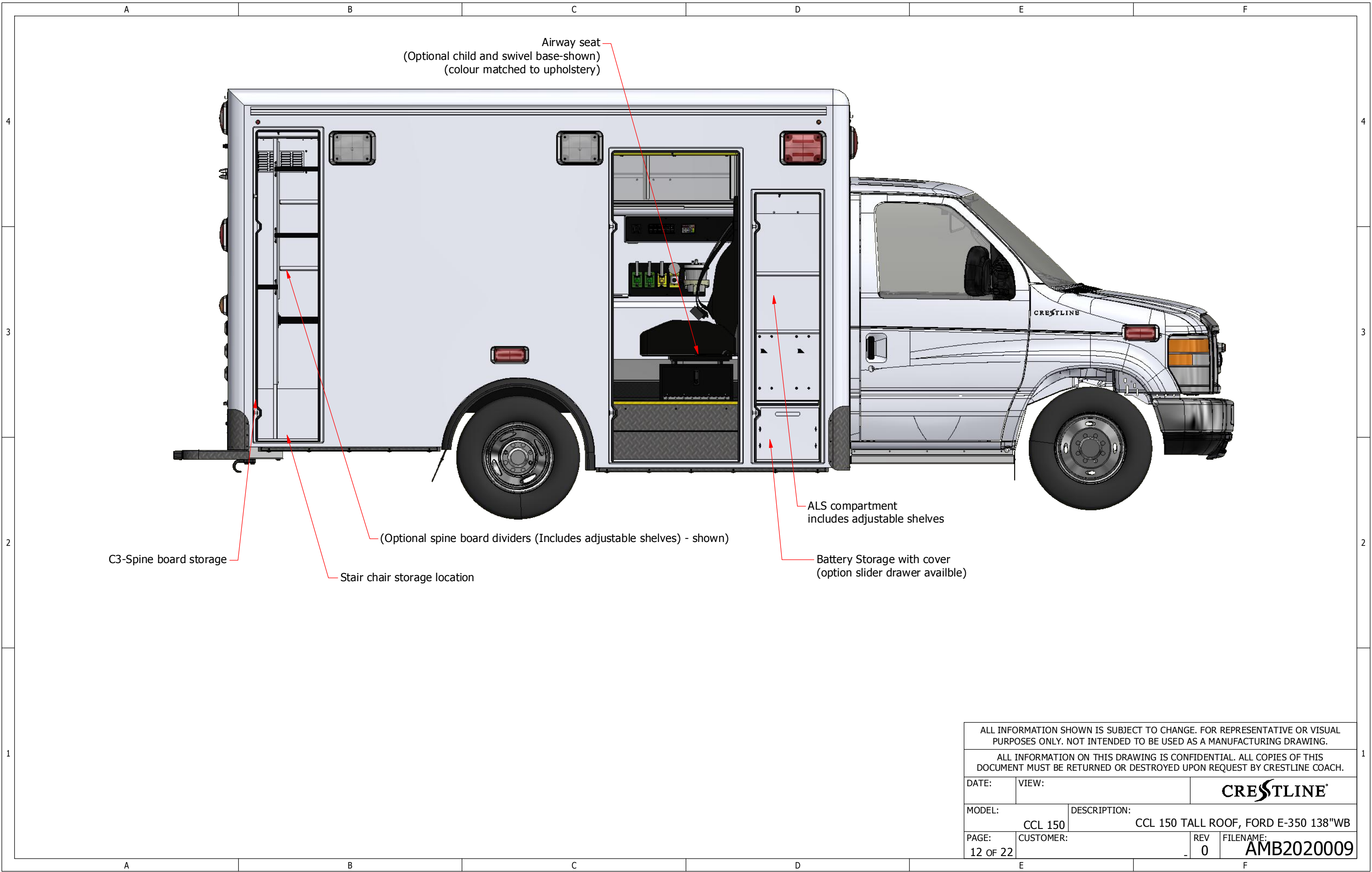
S2 - ECC (upper) / Storage (lower)
compartment
32.125"(w) x 37"(h) x 13"(d)

S3 - Interior/Exterior access storage compartment
32.625"(w) x 32.875"(h) x 17"(d)

ALL INFORMATION SHOWN IS SUBJECT TO CHANGE. FOR REPRESENTATIVE OR VISUAL PURPOSES ONLY. NOT INTENDED TO BE USED AS A MANUFACTURING DRAWING.			
ALL INFORMATION ON THIS DRAWING IS CONFIDENTIAL. ALL COPIES OF THIS DOCUMENT MUST BE RETURNED OR DESTROYED UPON REQUEST BY CRESTLINE COACH.			
DATE:	VIEW:	CRESTLINE	
MODEL:	CCL 150	DESCRIPTION:	CCL 150 TALL ROOF, FORD E-350 138"WB
PAGE:	CUSTOMER:	REV	FILENAME:
10 OF 22		0	AMB2020009



ALL INFORMATION SHOWN IS SUBJECT TO CHANGE. FOR REPRESENTATIVE OR VISUAL PURPOSES ONLY. NOT INTENDED TO BE USED AS A MANUFACTURING DRAWING.			
ALL INFORMATION ON THIS DRAWING IS CONFIDENTIAL. ALL COPIES OF THIS DOCUMENT MUST BE RETURNED OR DESTROYED UPON REQUEST BY CRESTLINE COACH.			
DATE:	VIEW:	CRESTLINE	
MODEL:	CCL 150	DESCRIPTION:	CCL 150 TALL ROOF, FORD E-350 138"WB
PAGE:	CUSTOMER:	REV	FILENAME:
11 OF 22		0	AMB2020009



Airway seat
 (Optional child and swivel base-shown)
 (colour matched to upholstery)

C3-Spine board storage

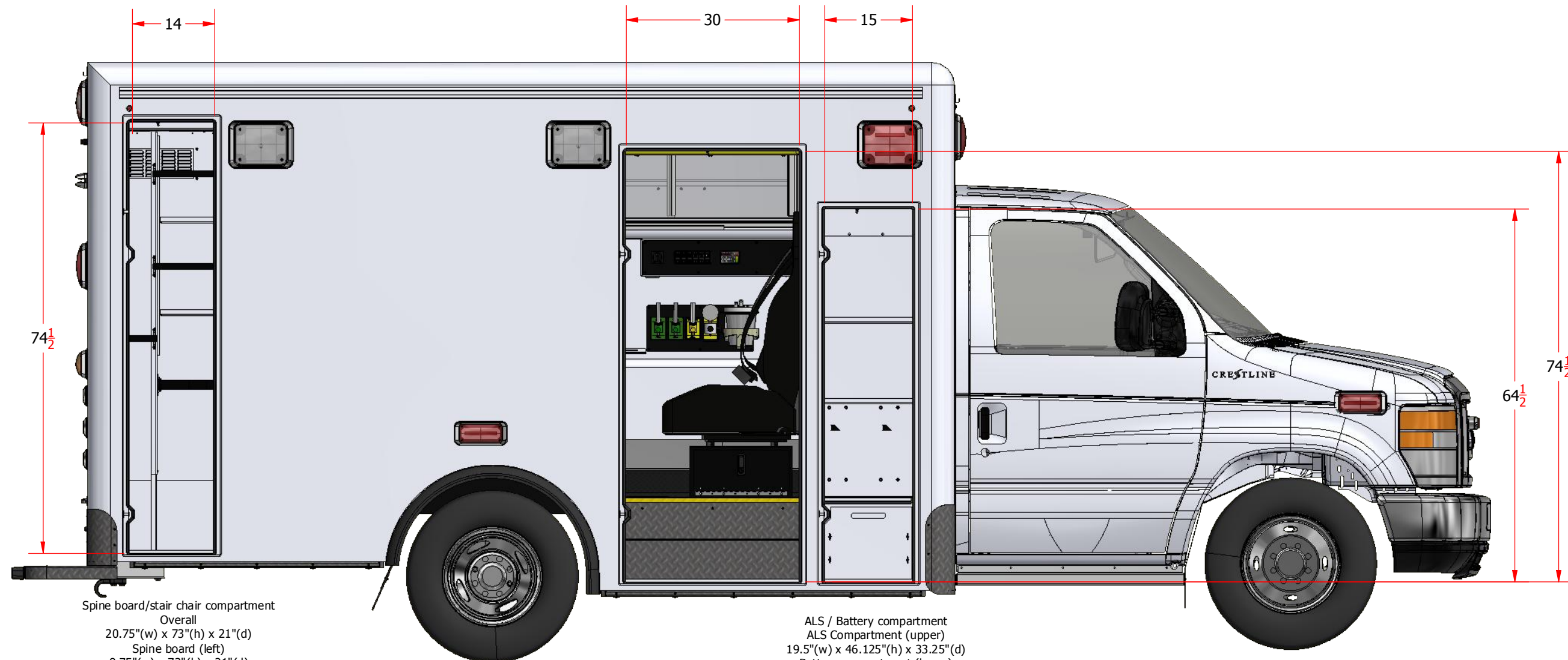
Stair chair storage location

(Optional spine board dividers (Includes adjustable shelves) - shown)

ALS compartment
 includes adjustable shelves

Battery Storage with cover
 (option slider drawer available)

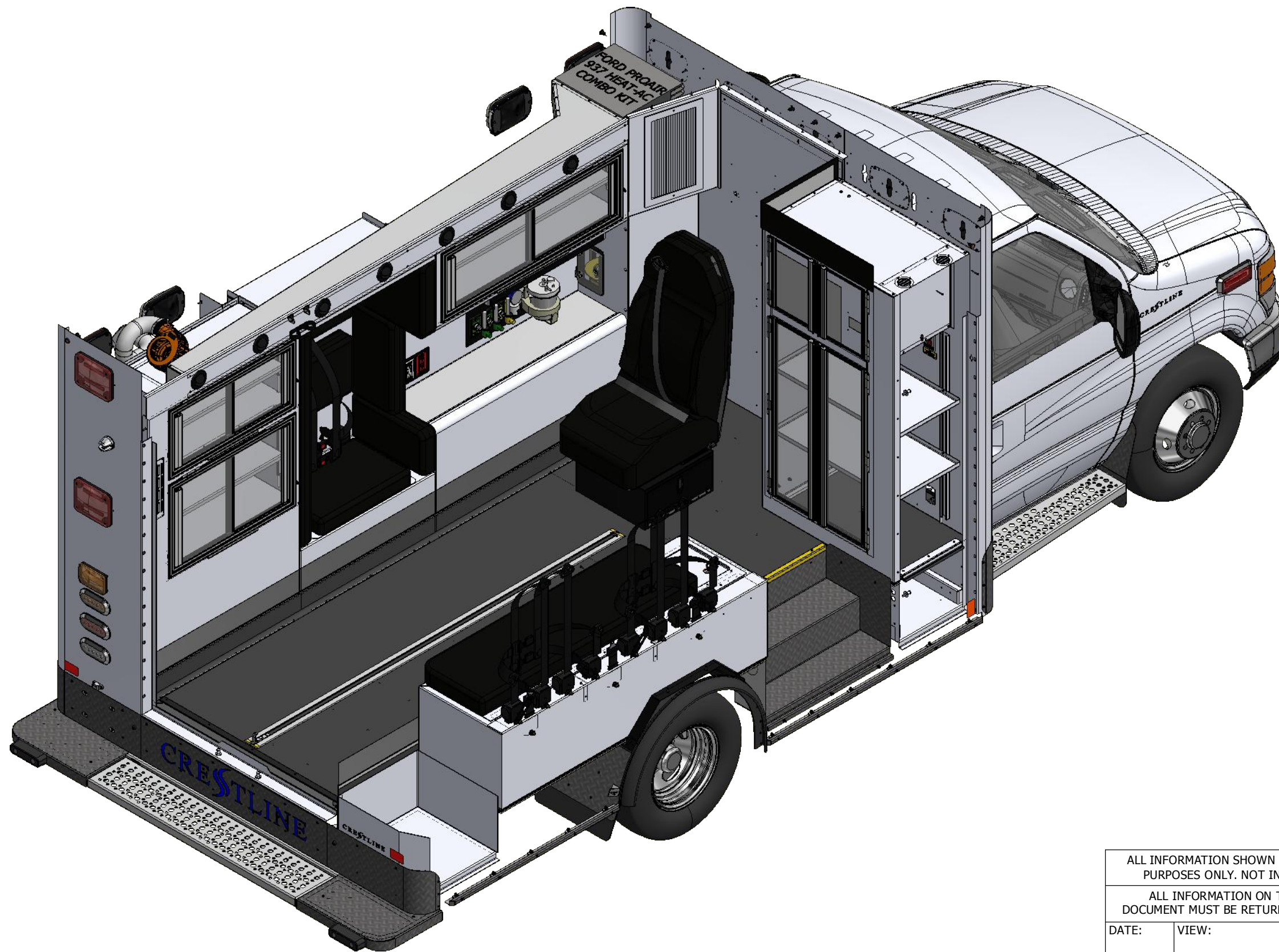
ALL INFORMATION SHOWN IS SUBJECT TO CHANGE. FOR REPRESENTATIVE OR VISUAL PURPOSES ONLY. NOT INTENDED TO BE USED AS A MANUFACTURING DRAWING.			
ALL INFORMATION ON THIS DRAWING IS CONFIDENTIAL. ALL COPIES OF THIS DOCUMENT MUST BE RETURNED OR DESTROYED UPON REQUEST BY CRESTLINE COACH.			
DATE:	VIEW:	CRESTLINE	
MODEL:	CCL 150	DESCRIPTION:	CCL 150 TALL ROOF, FORD E-350 138"WB
PAGE:	CUSTOMER:	REV	FILENAME:
12 OF 22		0	AMB2020009



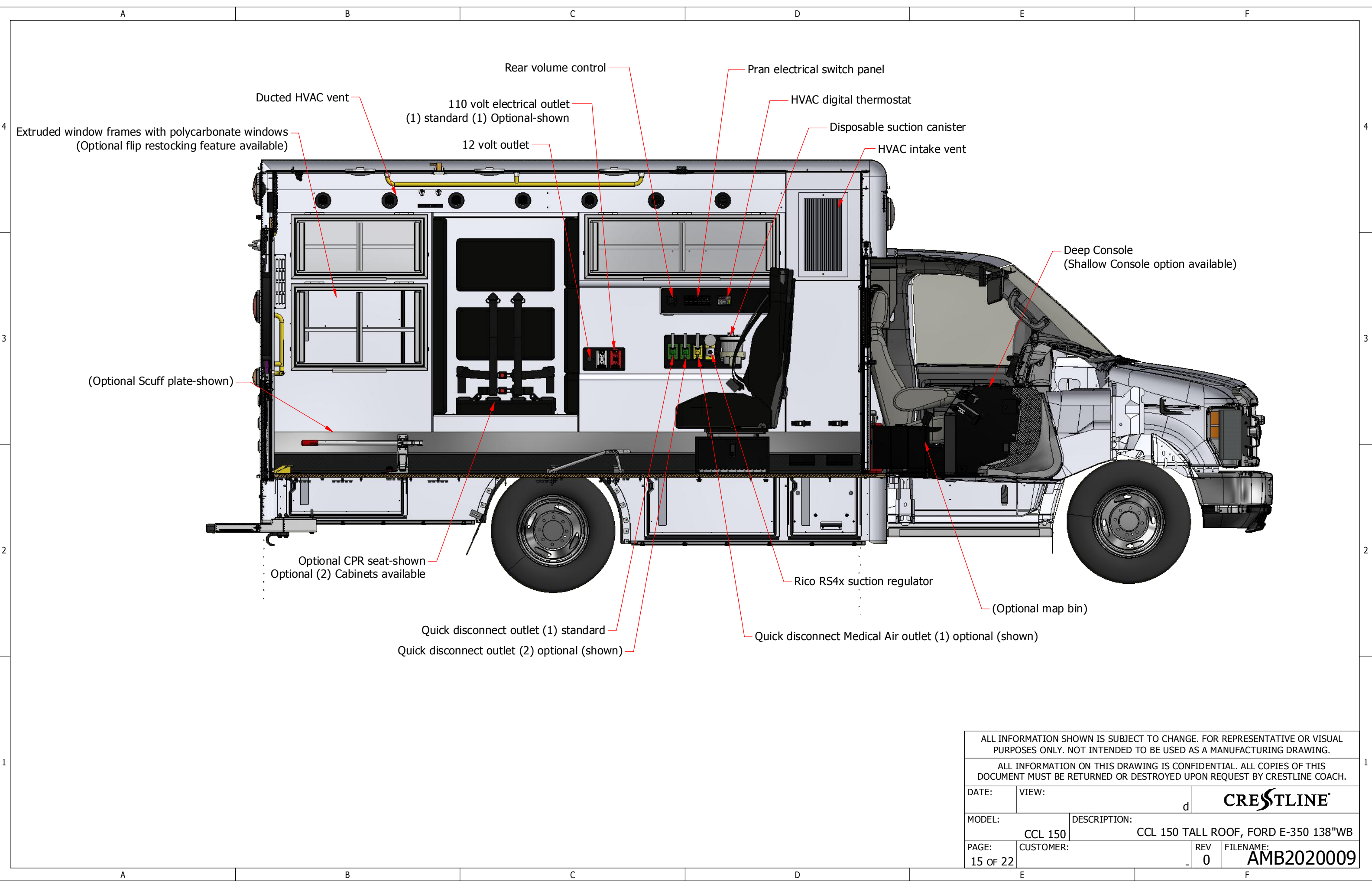
Spine board/stair chair compartment
 Overall
 20.75"(w) x 73"(h) x 21"(d)
 Spine board (left)
 8.75"(w) x 73"(h) x 21"(d)
 Stair chair (right lower)
 11"(w) x 41"(h) x 21"(d)
 Storage (c-collar) (right upper)
 11"(w) x 32"(h) x 21"(d)

ALS / Battery compartment
 ALS Compartment (upper)
 19.5"(w) x 46.125"(h) x 33.25"(d)
 Battery compartment (lower)
 17.25"(w) x 13.625"(h) x 19.25"(d)

ALL INFORMATION SHOWN IS SUBJECT TO CHANGE. FOR REPRESENTATIVE OR VISUAL PURPOSES ONLY. NOT INTENDED TO BE USED AS A MANUFACTURING DRAWING.			
ALL INFORMATION ON THIS DRAWING IS CONFIDENTIAL. ALL COPIES OF THIS DOCUMENT MUST BE RETURNED OR DESTROYED UPON REQUEST BY CRESTLINE COACH.			
DATE:	VIEW:	CRESTLINE	
MODEL:	CCL 150	DESCRIPTION:	CCL 150 TALL ROOF, FORD E-350 138"WB
PAGE:	CUSTOMER:	REV	FILENAME:
13 OF 22		0	AMB2020009



ALL INFORMATION SHOWN IS SUBJECT TO CHANGE. FOR REPRESENTATIVE OR VISUAL PURPOSES ONLY. NOT INTENDED TO BE USED AS A MANUFACTURING DRAWING.			
ALL INFORMATION ON THIS DRAWING IS CONFIDENTIAL. ALL COPIES OF THIS DOCUMENT MUST BE RETURNED OR DESTROYED UPON REQUEST BY CRESTLINE COACH.			
DATE:	VIEW:	Interior view	
MODEL:	CCL 150	DESCRIPTION:	CCL 150 TALL ROOF, FORD E-350 138"WB
PAGE:	CUSTOMER:	REV	FILENAME:
14 OF 22		0	AMB2020009



4
 Ducted HVAC vent
 Extruded window frames with polycarbonate windows
 (Optional flip restocking feature available)

110 volt electrical outlet
 (1) standard (1) Optional-shown
 12 volt outlet

Rear volume control
 Pran electrical switch panel

HVAC digital thermostat
 Disposable suction canister
 HVAC intake vent

(Optional Scuff plate-shown)

Deep Console
 (Shallow Console option available)

Optional CPR seat-shown
 Optional (2) Cabinets available

Rico RS4x suction regulator

(Optional map bin)

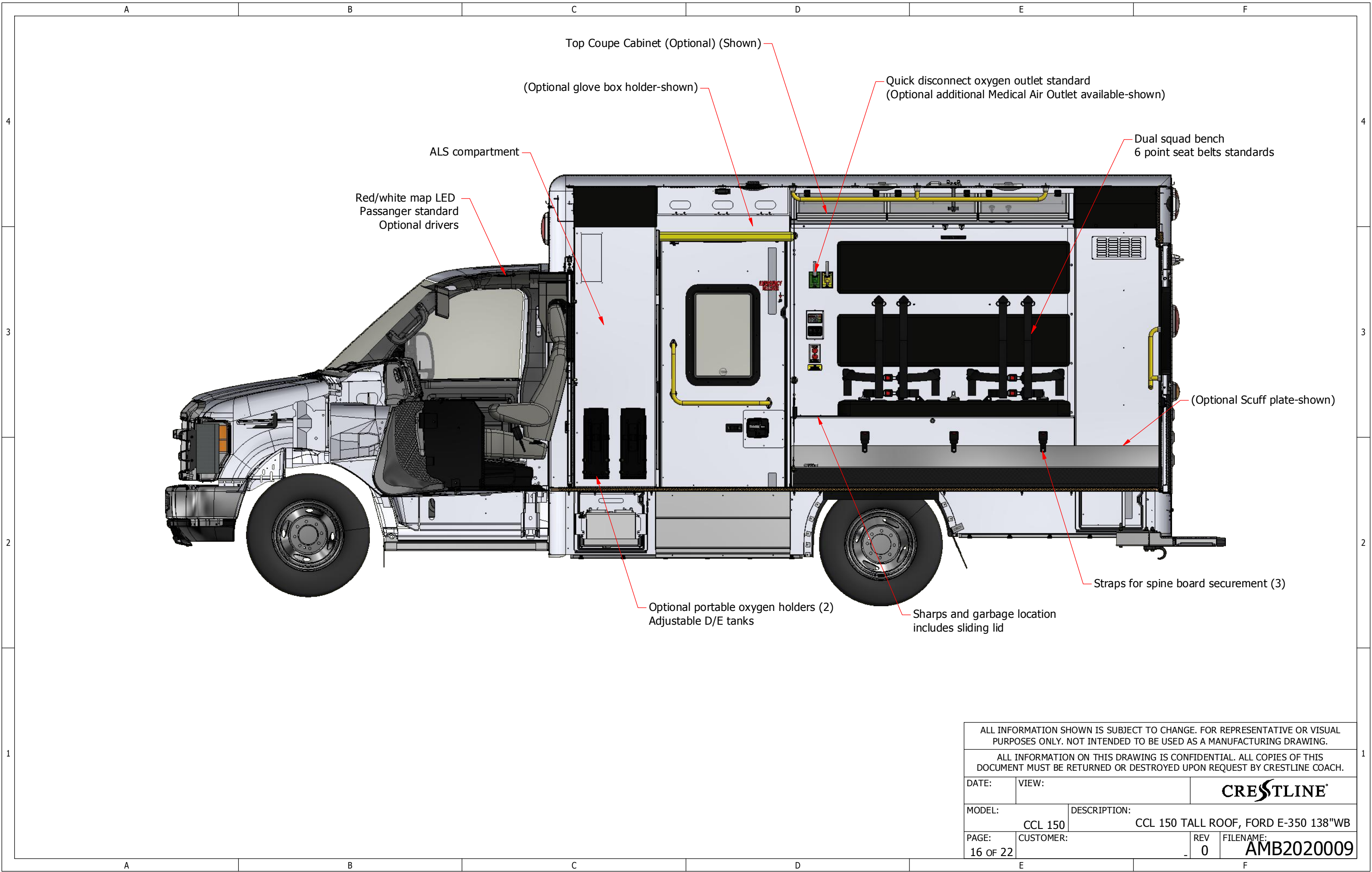
Quick disconnect outlet (1) standard
 Quick disconnect outlet (2) optional (shown)

Quick disconnect Medical Air outlet (1) optional (shown)

ALL INFORMATION SHOWN IS SUBJECT TO CHANGE. FOR REPRESENTATIVE OR VISUAL PURPOSES ONLY. NOT INTENDED TO BE USED AS A MANUFACTURING DRAWING.

ALL INFORMATION ON THIS DRAWING IS CONFIDENTIAL. ALL COPIES OF THIS DOCUMENT MUST BE RETURNED OR DESTROYED UPON REQUEST BY CRESTLINE COACH.

DATE:	VIEW:	d	CRESTLINE	
MODEL:	CCL 150	DESCRIPTION:	CCL 150 TALL ROOF, FORD E-350 138"WB	
PAGE:	CUSTOMER:	REV	FILENAME:	
15 OF 22		0	AMB2020009	



Top Coupe Cabinet (Optional) (Shown)

(Optional glove box holder-shown)

Quick disconnect oxygen outlet standard
(Optional additional Medical Air Outlet available-shown)

Dual squad bench
6 point seat belts standards

ALS compartment

Red/white map LED
Passanger standard
Optional drivers

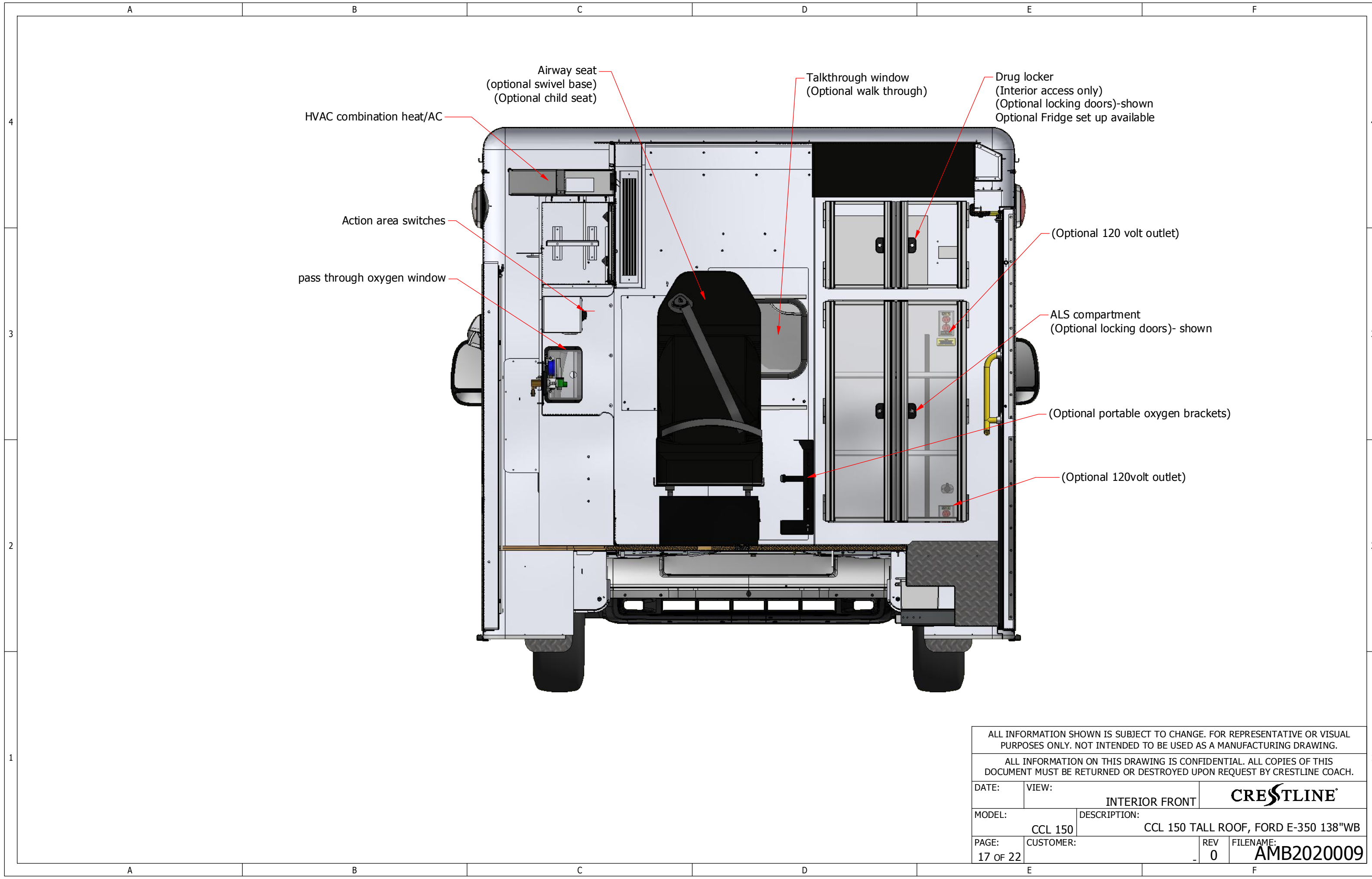
(Optional Scuff plate-shown)

Straps for spine board securement (3)

Optional portable oxygen holders (2)
Adjustable D/E tanks

Sharps and garbage location
includes sliding lid

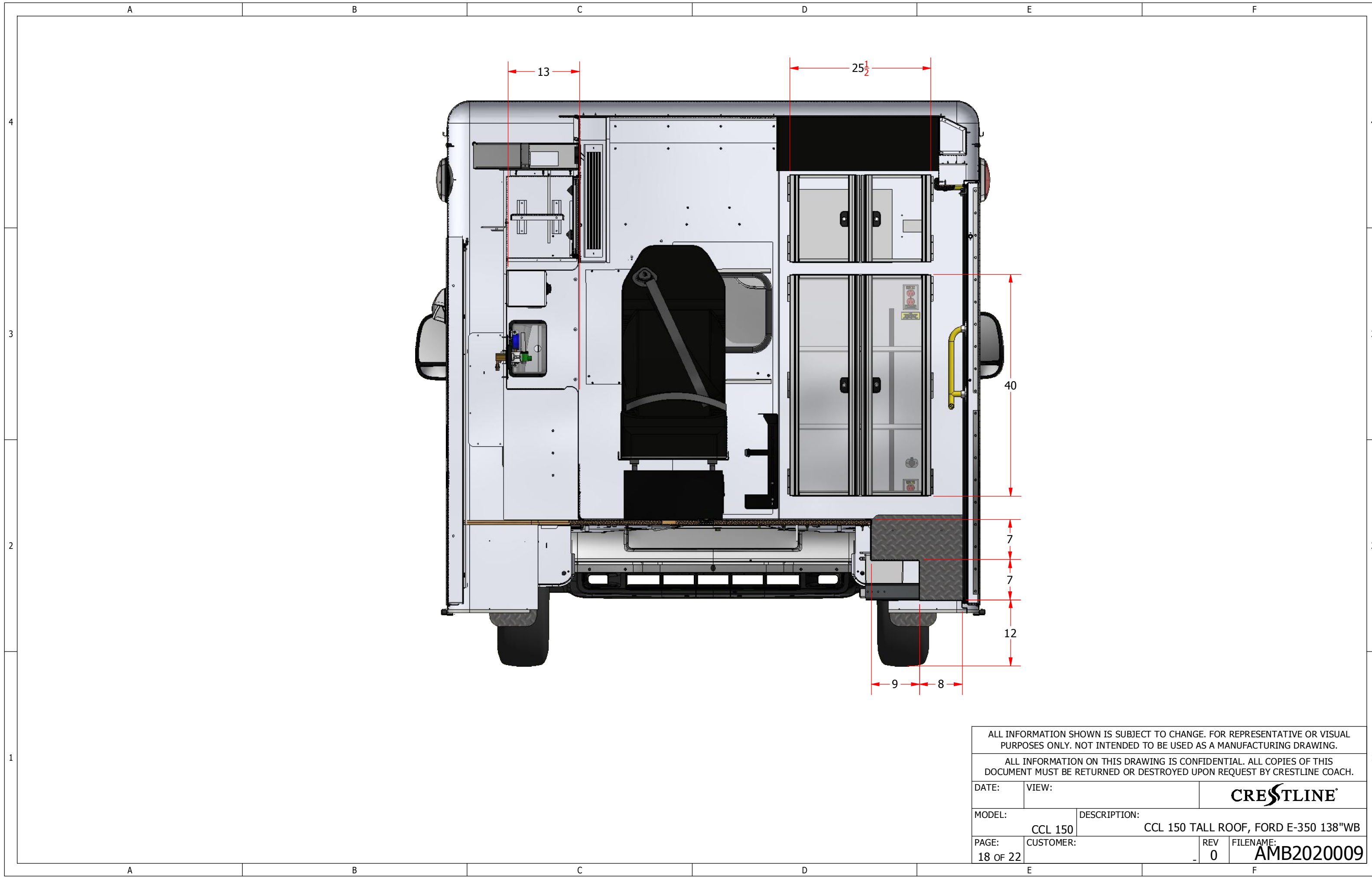
ALL INFORMATION SHOWN IS SUBJECT TO CHANGE. FOR REPRESENTATIVE OR VISUAL PURPOSES ONLY. NOT INTENDED TO BE USED AS A MANUFACTURING DRAWING.			
ALL INFORMATION ON THIS DRAWING IS CONFIDENTIAL. ALL COPIES OF THIS DOCUMENT MUST BE RETURNED OR DESTROYED UPON REQUEST BY CRESTLINE COACH.			
DATE:	VIEW:	CRESTLINE	
MODEL:	CCL 150	DESCRIPTION:	CCL 150 TALL ROOF, FORD E-350 138"WB
PAGE:	CUSTOMER:	REV	FILENAME:
16 OF 22		0	AMB2020009



ALL INFORMATION SHOWN IS SUBJECT TO CHANGE. FOR REPRESENTATIVE OR VISUAL PURPOSES ONLY. NOT INTENDED TO BE USED AS A MANUFACTURING DRAWING.

ALL INFORMATION ON THIS DRAWING IS CONFIDENTIAL. ALL COPIES OF THIS DOCUMENT MUST BE RETURNED OR DESTROYED UPON REQUEST BY CRESTLINE COACH.

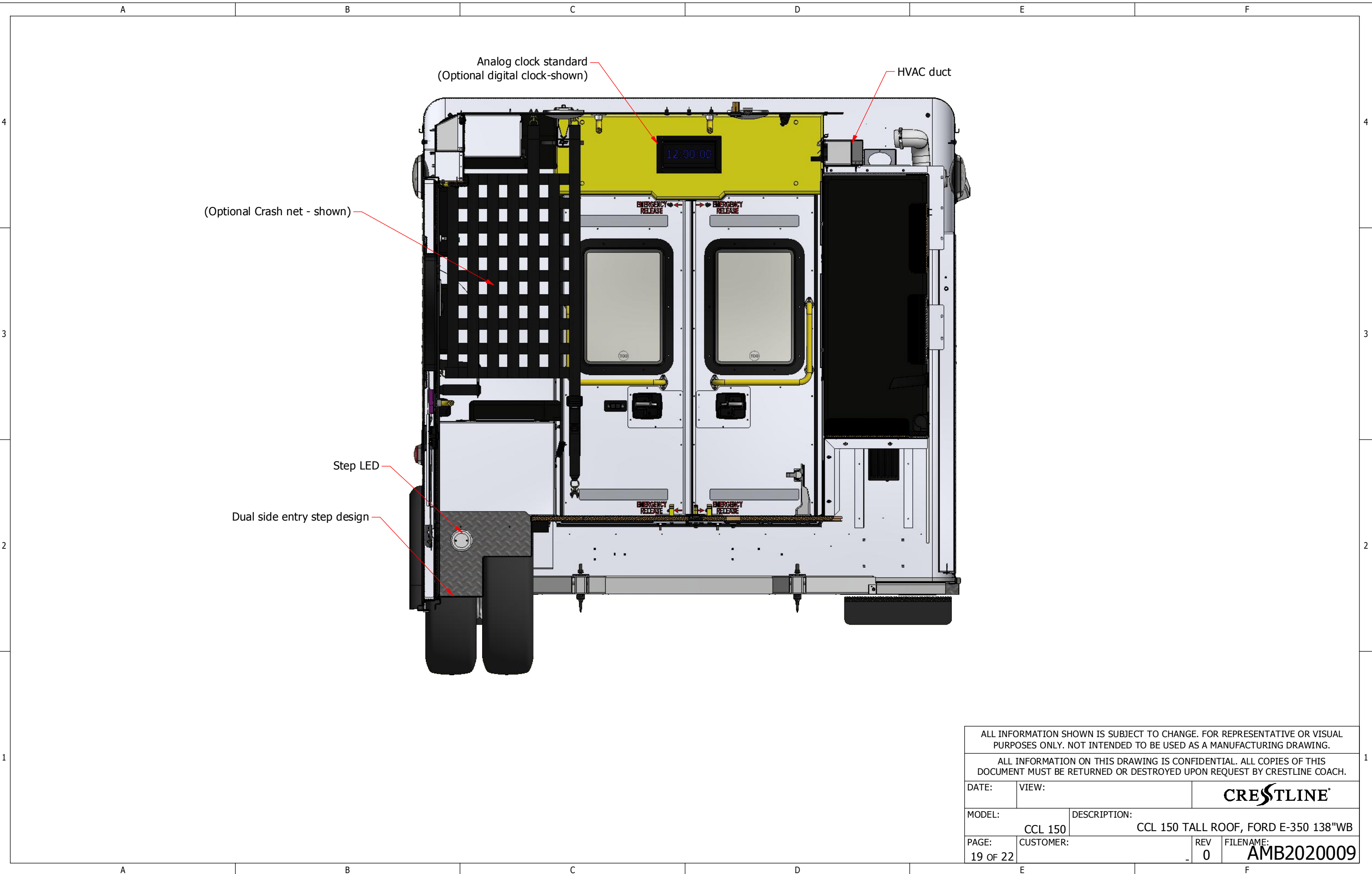
DATE:	VIEW:	INTERIOR FRONT	CRESTLINE
MODEL:	DESCRIPTION:	CCL 150	
PAGE:	CUSTOMER:	REV	FILENAME:
17 OF 22		0	AMB2020009



ALL INFORMATION SHOWN IS SUBJECT TO CHANGE. FOR REPRESENTATIVE OR VISUAL PURPOSES ONLY. NOT INTENDED TO BE USED AS A MANUFACTURING DRAWING.

ALL INFORMATION ON THIS DRAWING IS CONFIDENTIAL. ALL COPIES OF THIS DOCUMENT MUST BE RETURNED OR DESTROYED UPON REQUEST BY CRESTLINE COACH.

DATE:	VIEW:	CRESTLINE	
MODEL:	CCL 150	DESCRIPTION:	CCL 150 TALL ROOF, FORD E-350 138"WB
PAGE:	CUSTOMER:	REV	FILENAME:
18 OF 22		0	AMB2020009



Analog clock standard
(Optional digital clock-shown)

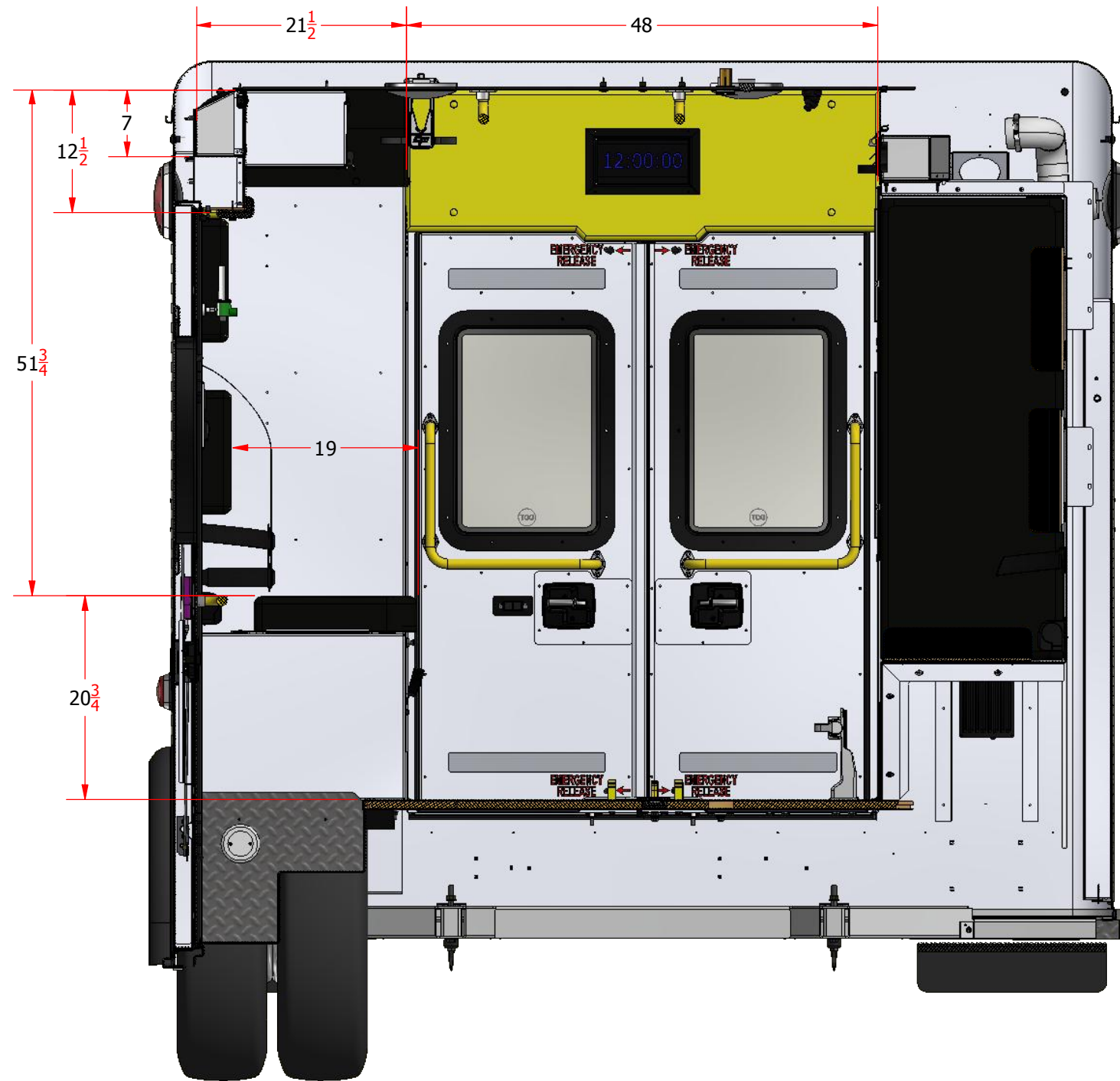
HVAC duct

(Optional Crash net - shown)

Step LED

Dual side entry step design

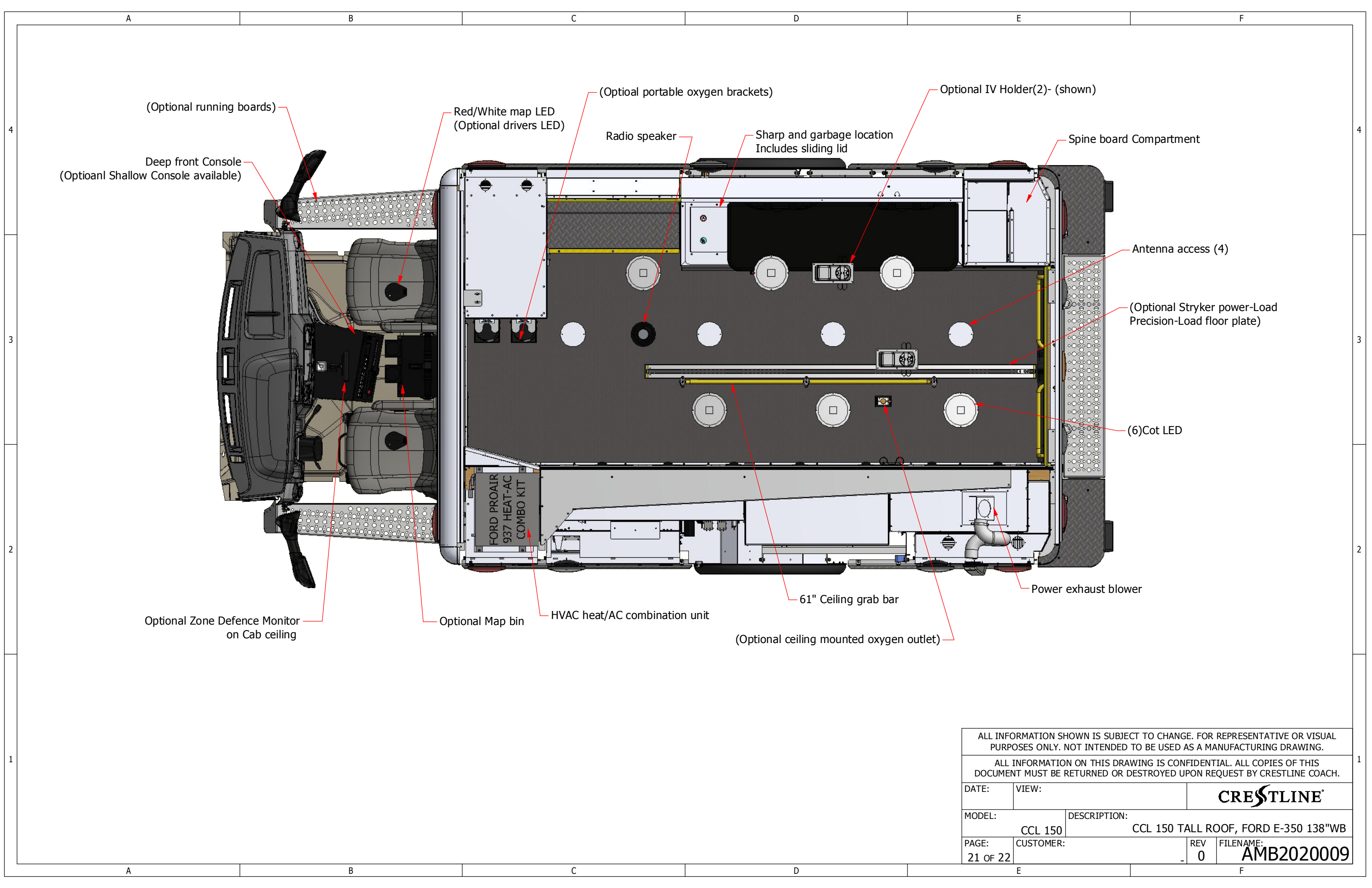
ALL INFORMATION SHOWN IS SUBJECT TO CHANGE. FOR REPRESENTATIVE OR VISUAL PURPOSES ONLY. NOT INTENDED TO BE USED AS A MANUFACTURING DRAWING.			
ALL INFORMATION ON THIS DRAWING IS CONFIDENTIAL. ALL COPIES OF THIS DOCUMENT MUST BE RETURNED OR DESTROYED UPON REQUEST BY CRESTLINE COACH.			
DATE:	VIEW:	CRESTLINE	
MODEL:	CCL 150	DESCRIPTION:	CCL 150 TALL ROOF, FORD E-350 138"WB
PAGE:	CUSTOMER:	REV	FILENAME:
19 OF 22		0	AMB2020009



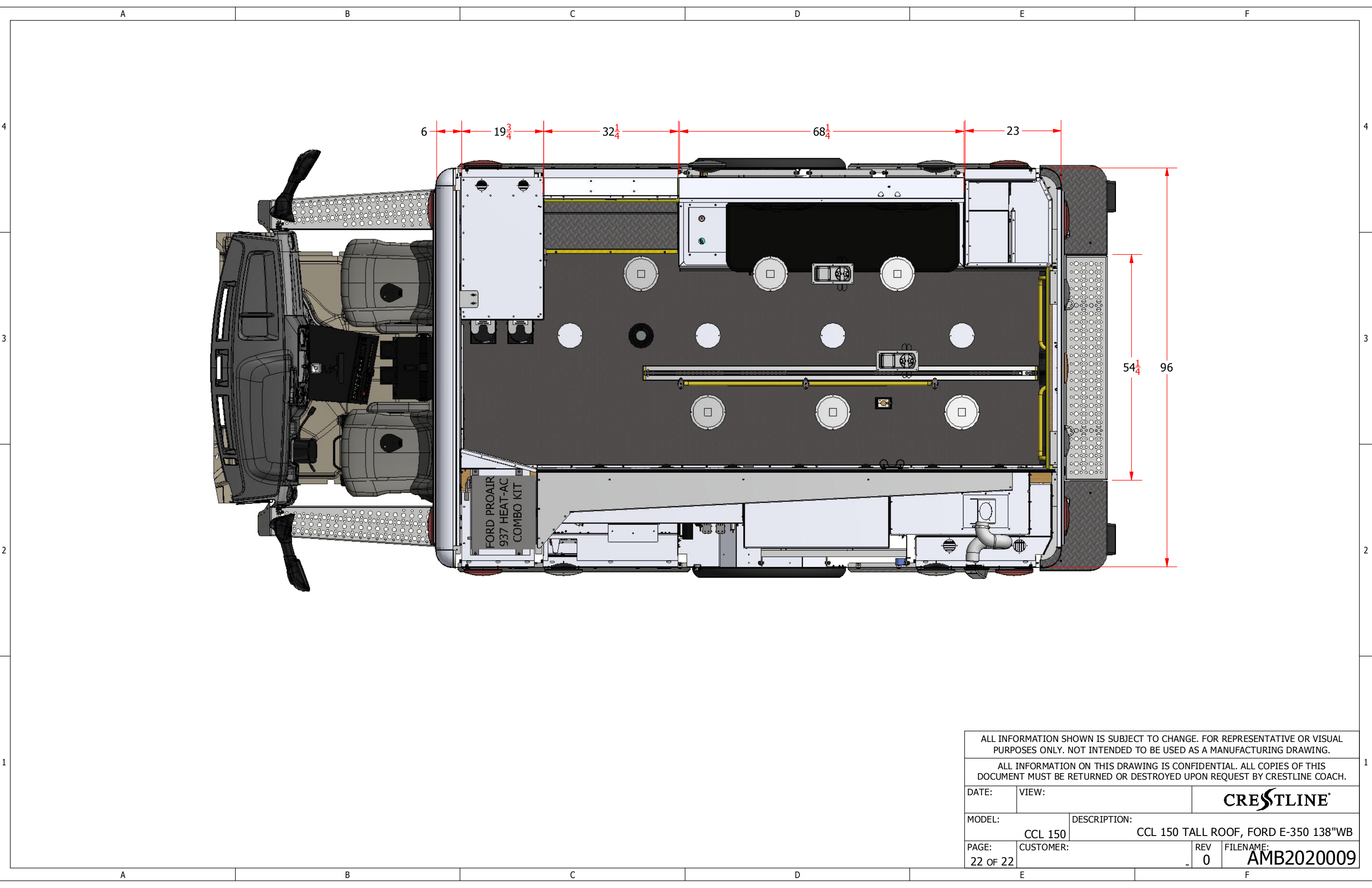
ALL INFORMATION SHOWN IS SUBJECT TO CHANGE. FOR REPRESENTATIVE OR VISUAL PURPOSES ONLY. NOT INTENDED TO BE USED AS A MANUFACTURING DRAWING.

ALL INFORMATION ON THIS DRAWING IS CONFIDENTIAL. ALL COPIES OF THIS DOCUMENT MUST BE RETURNED OR DESTROYED UPON REQUEST BY CRESTLINE COACH.

DATE:	VIEW:	CRESTLINE	
MODEL:	CCL 150	DESCRIPTION:	CCL 150 TALL ROOF, FORD E-350 138"WB
PAGE:	20 OF 22	CUSTOMER:	REV 0 FILENAME: AMB2020009



ALL INFORMATION SHOWN IS SUBJECT TO CHANGE. FOR REPRESENTATIVE OR VISUAL PURPOSES ONLY. NOT INTENDED TO BE USED AS A MANUFACTURING DRAWING.			
ALL INFORMATION ON THIS DRAWING IS CONFIDENTIAL. ALL COPIES OF THIS DOCUMENT MUST BE RETURNED OR DESTROYED UPON REQUEST BY CRESTLINE COACH.			
DATE:	VIEW:	CRESTLINE	
MODEL:	CCL 150	DESCRIPTION:	CCL 150 TALL ROOF, FORD E-350 138"WB
PAGE:	CUSTOMER:	REV	FILENAME:
21 OF 22		0	AMB2020009



ALL INFORMATION SHOWN IS SUBJECT TO CHANGE. FOR REPRESENTATIVE OR VISUAL PURPOSES ONLY. NOT INTENDED TO BE USED AS A MANUFACTURING DRAWING.

ALL INFORMATION ON THIS DRAWING IS CONFIDENTIAL. ALL COPIES OF THIS DOCUMENT MUST BE RETURNED OR DESTROYED UPON REQUEST BY CRESTLINE COACH.

DATE:	VIEW:	CRESTLINE	
MODEL:	CCL 150	DESCRIPTION:	CCL 150 TALL ROOF, FORD E-350 138"WB
PAGE:	CUSTOMER:	REV	FILENAME:
22 OF 22		0	AMB2020009