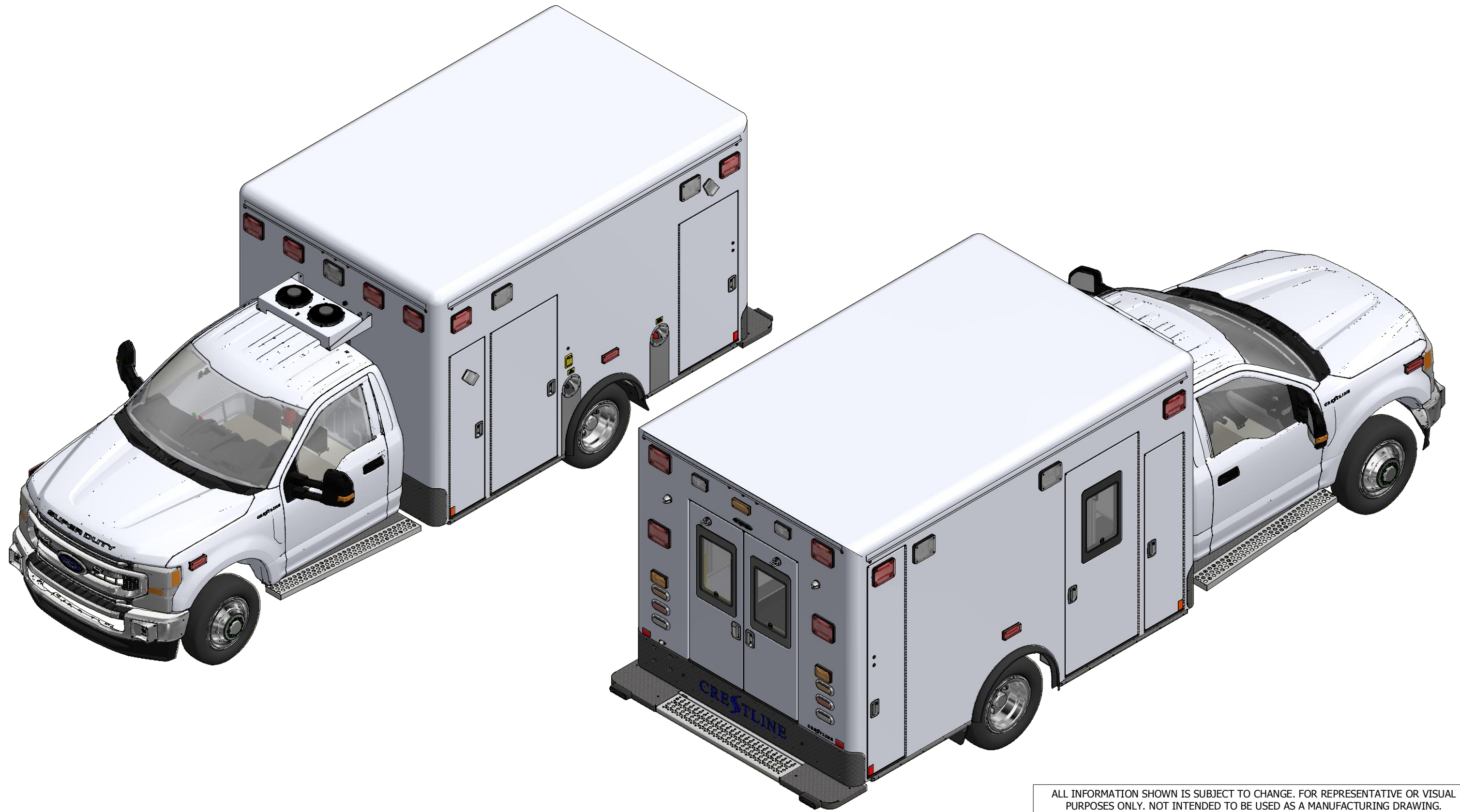




Crestline Ford - CCL 150 Tall Roof

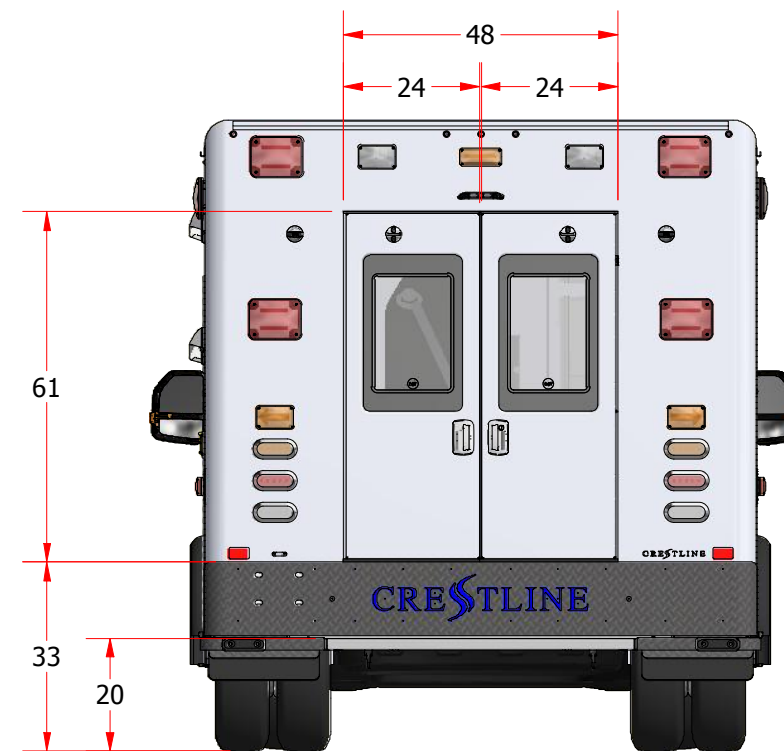
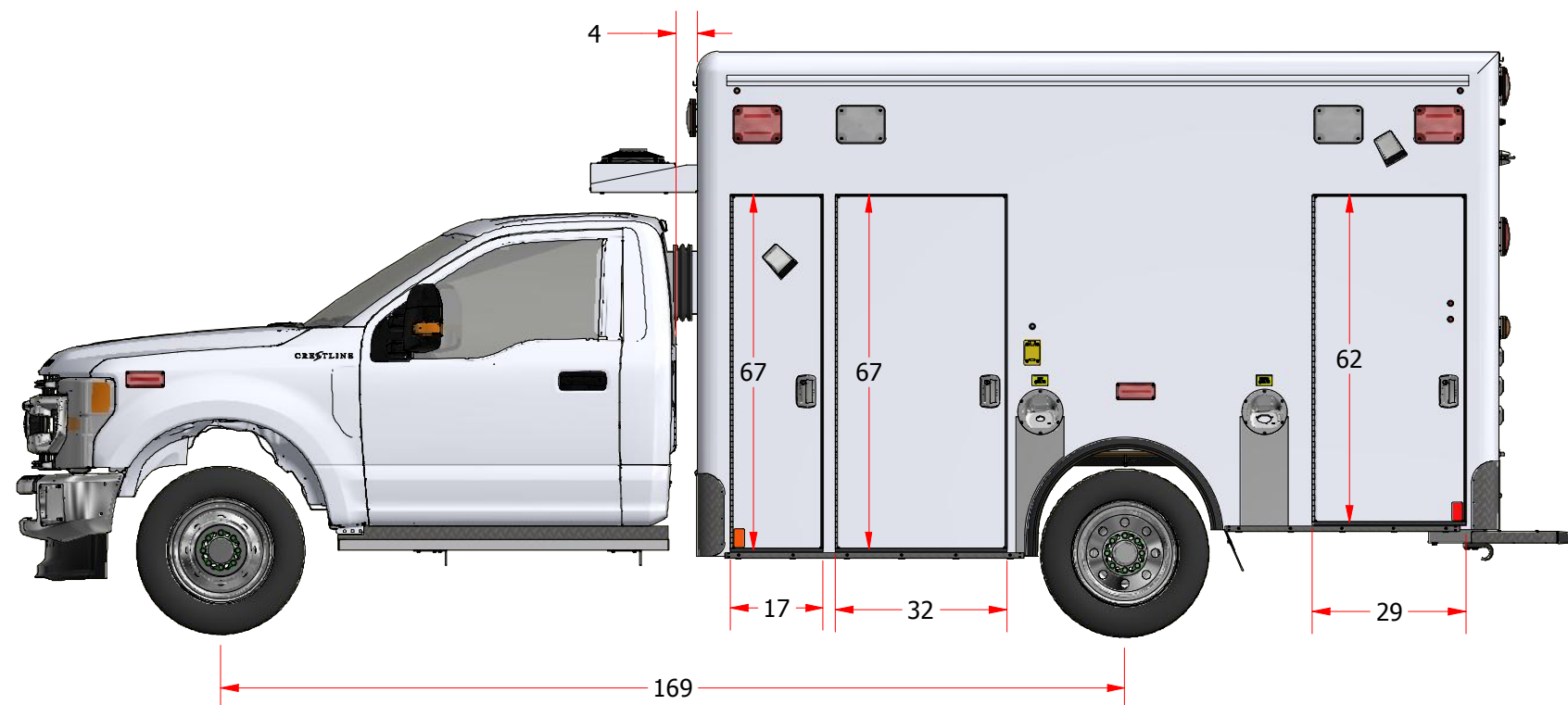
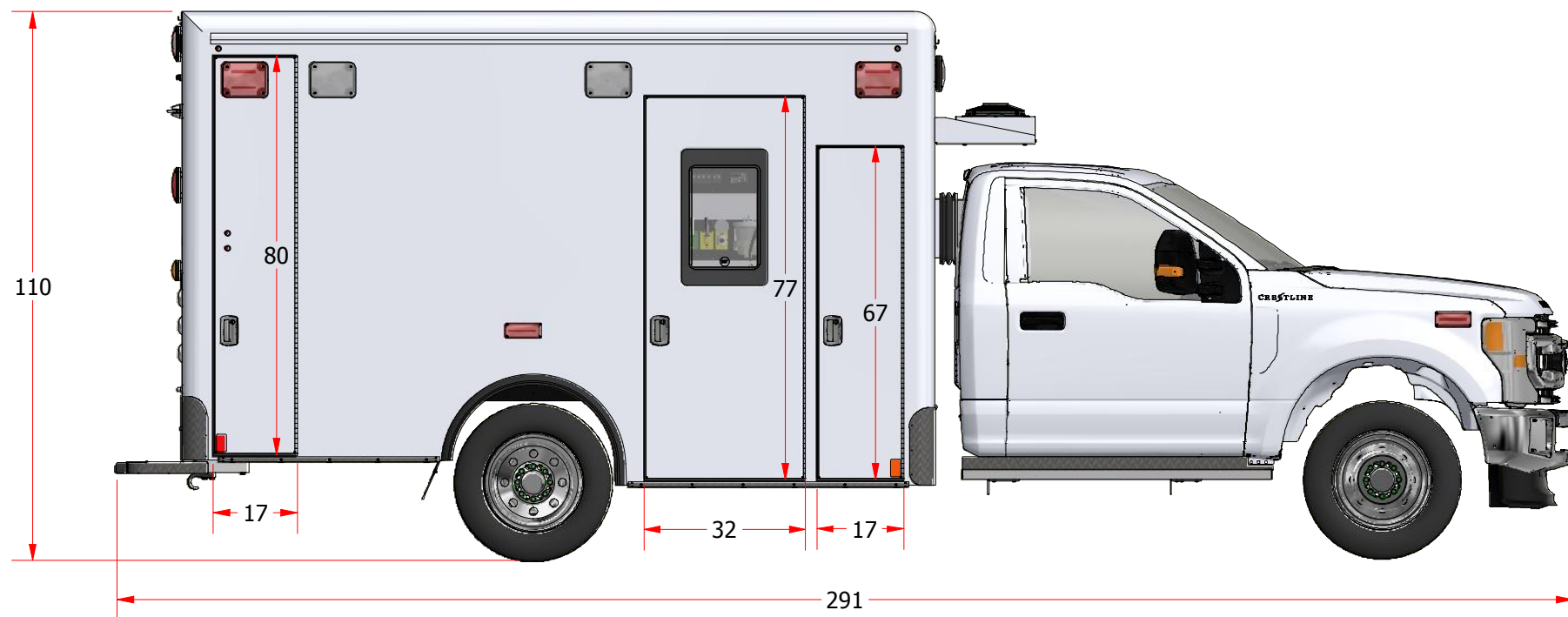
ALL INFORMATION SHOWN IS SUBJECT TO CHANGE. FOR REPRESENTATIVE OR VISUAL PURPOSES ONLY. NOT INTENDED TO BE USED AS A MANUFACTURING DRAWING.			
ALL INFORMATION ON THIS DRAWING IS CONFIDENTIAL. ALL COPIES OF THIS DOCUMENT MUST BE RETURNED OR DESTROYED UPON REQUEST BY CRESTLINE COACH.			
DATE:	VIEW:	CRESTLINE	
MODEL:	CCL 150	DESCRIPTION:	CCL150 TALL ROOF, FORD F-350, TYPE 1, 169" WB
PAGE:	CUSTOMER:	REV	FILENAME:
1 OF 22		0	AMB2020011



ALL INFORMATION SHOWN IS SUBJECT TO CHANGE. FOR REPRESENTATIVE OR VISUAL PURPOSES ONLY. NOT INTENDED TO BE USED AS A MANUFACTURING DRAWING.

ALL INFORMATION ON THIS DRAWING IS CONFIDENTIAL. ALL COPIES OF THIS DOCUMENT MUST BE RETURNED OR DESTROYED UPON REQUEST BY CRESTLINE COACH.

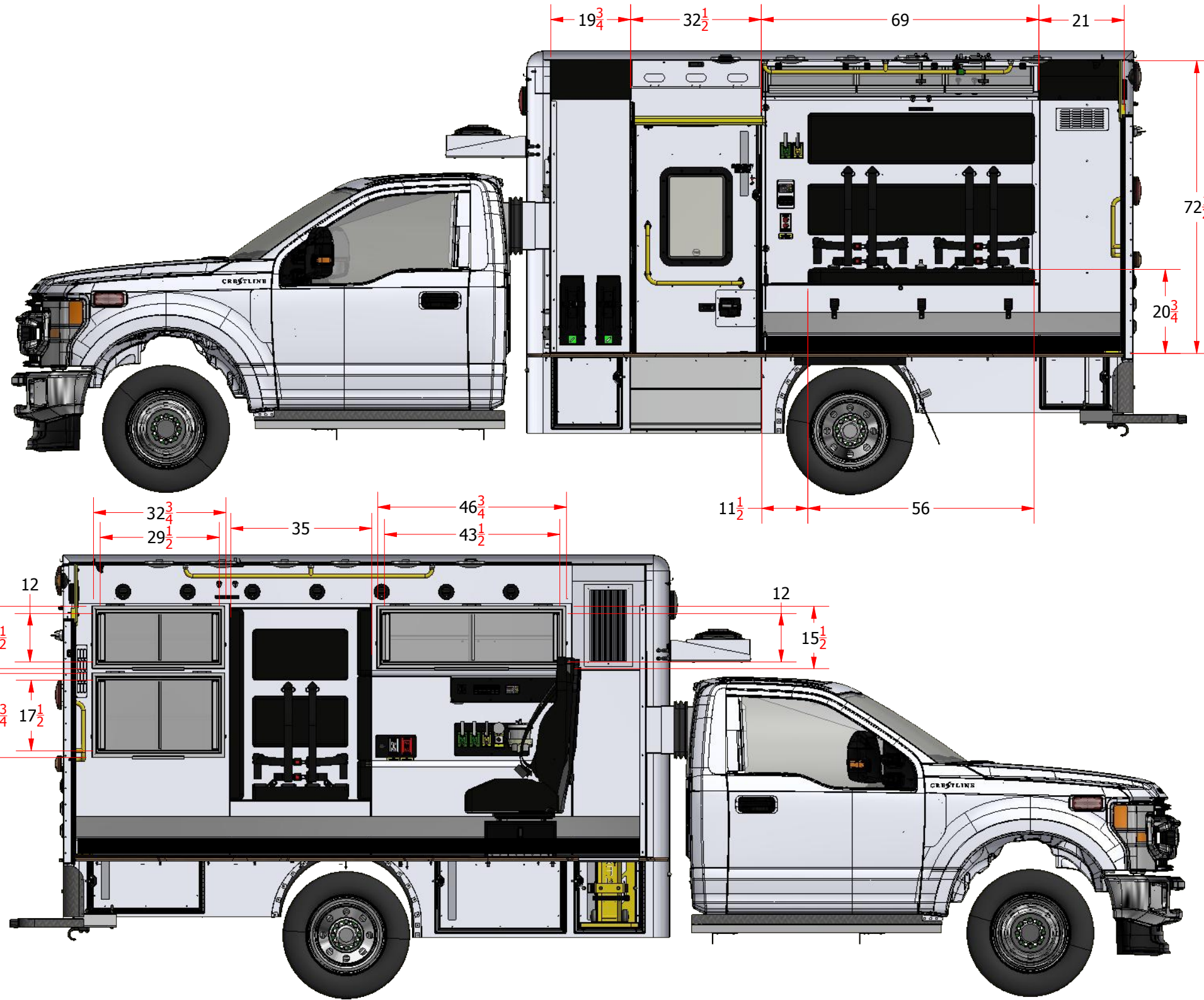
DATE:	VIEW:	CRESTLINE[®]	
MODEL:	CCL 150	DESCRIPTION:	CCL150 TALL ROOF, FORD F-350, TYPE 1, 169" WB
PAGE:	CUSTOMER:	REV	FILENAME:
2 OF 22		0	AMB2020011



ALL INFORMATION SHOWN IS SUBJECT TO CHANGE. FOR REPRESENTATIVE OR VISUAL PURPOSES ONLY. NOT INTENDED TO BE USED AS A MANUFACTURING DRAWING.

ALL INFORMATION ON THIS DRAWING IS CONFIDENTIAL. ALL COPIES OF THIS DOCUMENT MUST BE RETURNED OR DESTROYED UPON REQUEST BY CRESTLINE COACH.

DATE:	VIEW:	CRESTLINE	
MODEL:	CCL 150	DESCRIPTION:	CCL150 TALL ROOF, FORD F-350, TYPE 1, 169" WB
PAGE:	3 OF 22	CUSTOMER:	REV 0 FILENAME: AMB2020011



ALL INFORMATION SHOWN IS SUBJECT TO CHANGE. FOR REPRESENTATIVE OR VISUAL PURPOSES ONLY. NOT INTENDED TO BE USED AS A MANUFACTURING DRAWING.

ALL INFORMATION ON THIS DRAWING IS CONFIDENTIAL. ALL COPIES OF THIS DOCUMENT MUST BE RETURNED OR DESTROYED UPON REQUEST BY CRESTLINE COACH.

DATE:	VIEW:	Interior dimensions	CRESTLINE
MODEL:	CCL 150	DESCRIPTION:	CCL150 TALL ROOF, FORD F-350, TYPE 1, 169" WB
PAGE:	4 OF 22	CUSTOMER:	REV 0 FILENAME: AMB2020011

(2) Interior heights available
 68" Standard
 72" (Optional) (shown)

(Optional Condenser) - shown

Front 5 emergency light configuration (shown)
 5 x 900 series (R/R/W/R/R)-shown

(Optional 7 light configuration available
 7 x 900 series (R/W/R/W/R/W/R)

(Optional chrome flanges available)

FORD OEM Mirrors standard

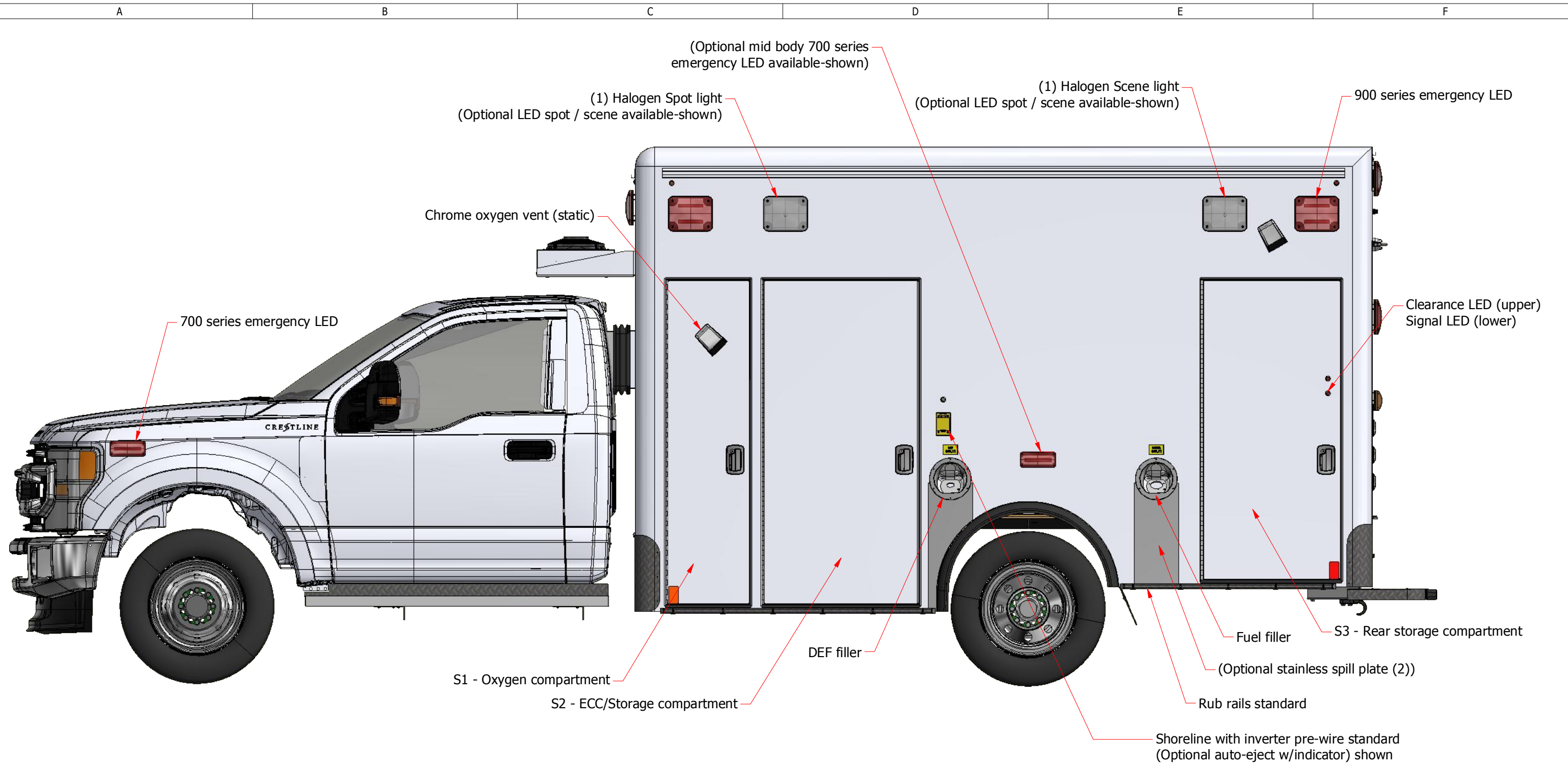
(2) red grill emergency LEDs standard



ALL INFORMATION SHOWN IS SUBJECT TO CHANGE. FOR REPRESENTATIVE OR VISUAL PURPOSES ONLY. NOT INTENDED TO BE USED AS A MANUFACTURING DRAWING.

ALL INFORMATION ON THIS DRAWING IS CONFIDENTIAL. ALL COPIES OF THIS DOCUMENT MUST BE RETURNED OR DESTROYED UPON REQUEST BY CRESTLINE COACH.

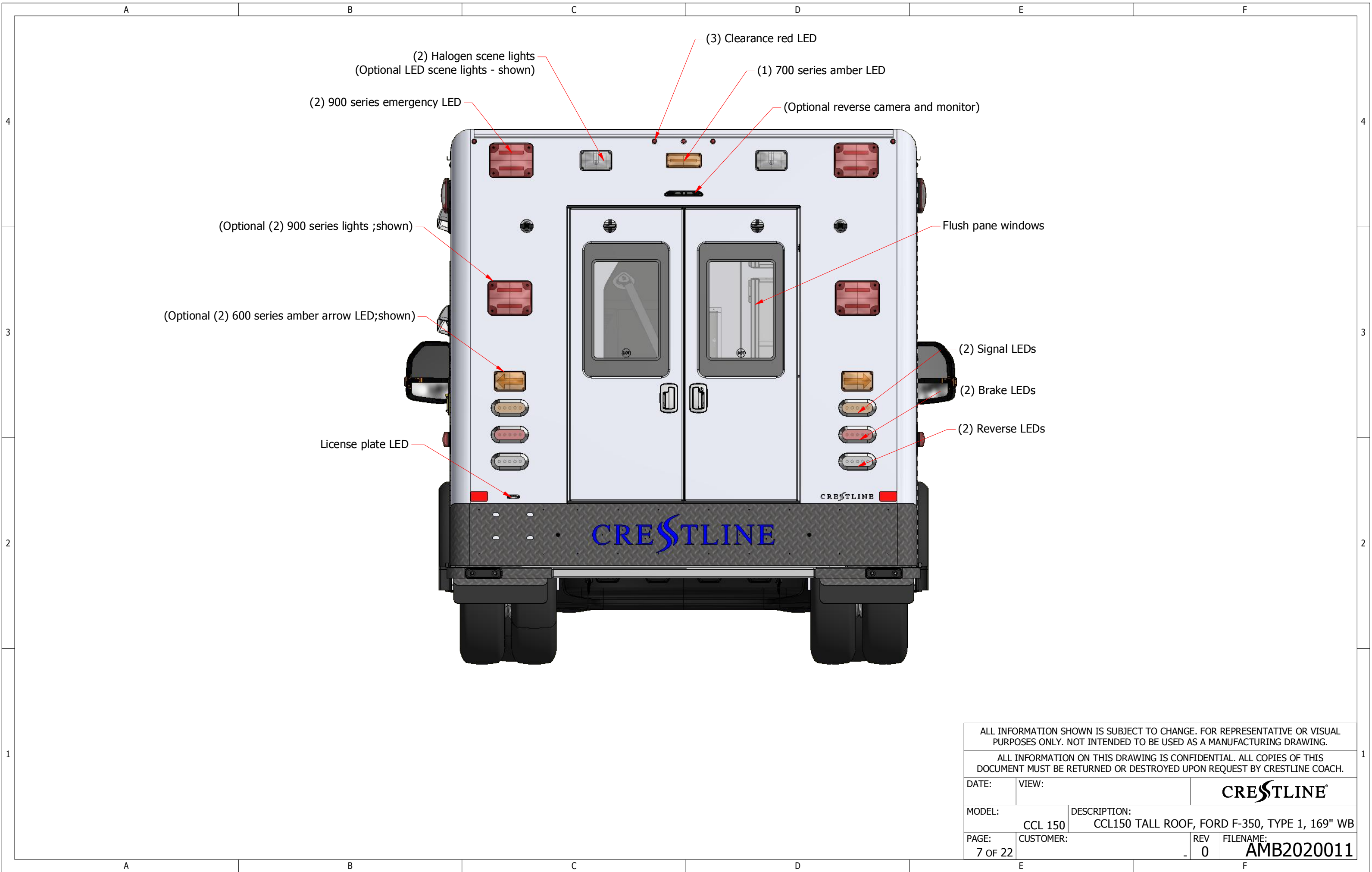
DATE:	VIEW:	CRESTLINE	
MODEL:	CCL 150	DESCRIPTION:	CCL150 TALL ROOF, FORD F-350, TYPE 1, 169" WB
PAGE:	5 OF 22	CUSTOMER:	REV 0 FILENAME: AMB2020011



ALL INFORMATION SHOWN IS SUBJECT TO CHANGE. FOR REPRESENTATIVE OR VISUAL PURPOSES ONLY. NOT INTENDED TO BE USED AS A MANUFACTURING DRAWING.

ALL INFORMATION ON THIS DRAWING IS CONFIDENTIAL. ALL COPIES OF THIS DOCUMENT MUST BE RETURNED OR DESTROYED UPON REQUEST BY CRESTLINE COACH.

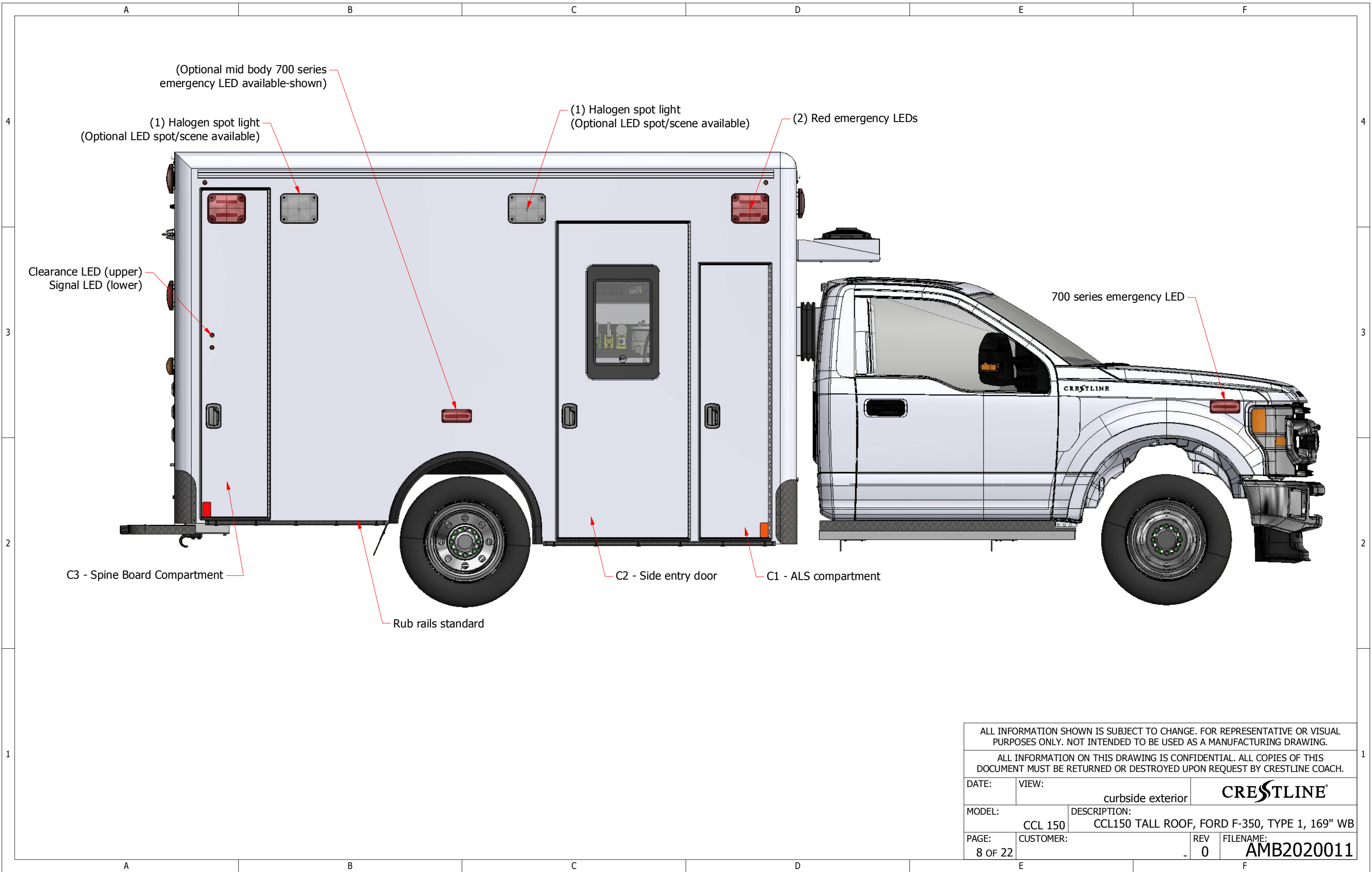
DATE:	VIEW:	CRESTLINE	
MODEL:	DESCRIPTION:		
CCL 150	CCL150 TALL ROOF, FORD F-350, TYPE 1, 169" WB	PAGE:	REV
6 OF 22	CUSTOMER:	6 OF 22	0
		FILENAME: AMB2020011	



ALL INFORMATION SHOWN IS SUBJECT TO CHANGE. FOR REPRESENTATIVE OR VISUAL PURPOSES ONLY. NOT INTENDED TO BE USED AS A MANUFACTURING DRAWING.

ALL INFORMATION ON THIS DRAWING IS CONFIDENTIAL. ALL COPIES OF THIS DOCUMENT MUST BE RETURNED OR DESTROYED UPON REQUEST BY CRESTLINE COACH.

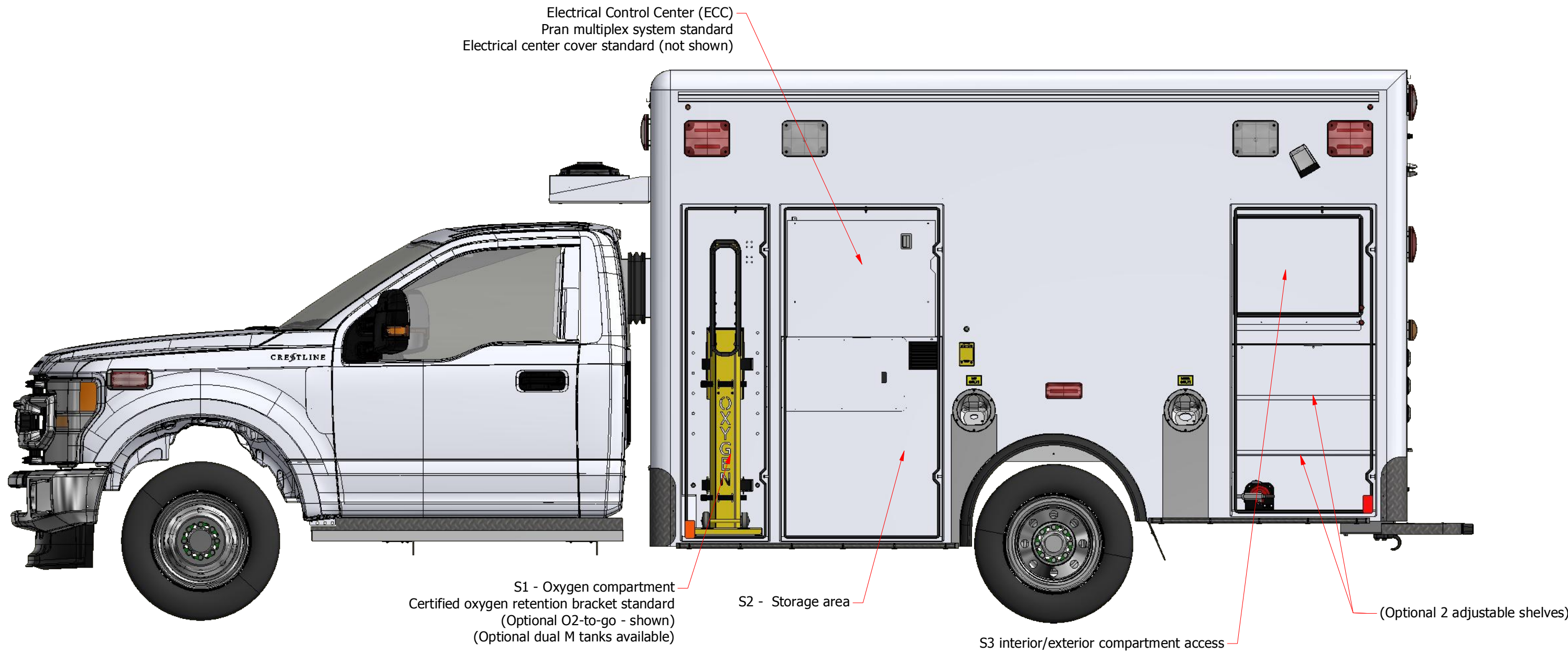
DATE:	VIEW:	CRESTLINE	
MODEL:	CCL 150	DESCRIPTION:	CCL150 TALL ROOF, FORD F-350, TYPE 1, 169" WB
PAGE:	CUSTOMER:	REV	FILENAME:
7 OF 22		0	AMB2020011



ALL INFORMATION SHOWN IS SUBJECT TO CHANGE. FOR REPRESENTATIVE OR VISUAL PURPOSES ONLY. NOT INTENDED TO BE USED AS A MANUFACTURING DRAWING.

ALL INFORMATION ON THIS DRAWING IS CONFIDENTIAL. ALL COPIES OF THIS DOCUMENT MUST BE RETURNED OR DESTROYED UPON REQUEST BY CRESTLINE COACH.

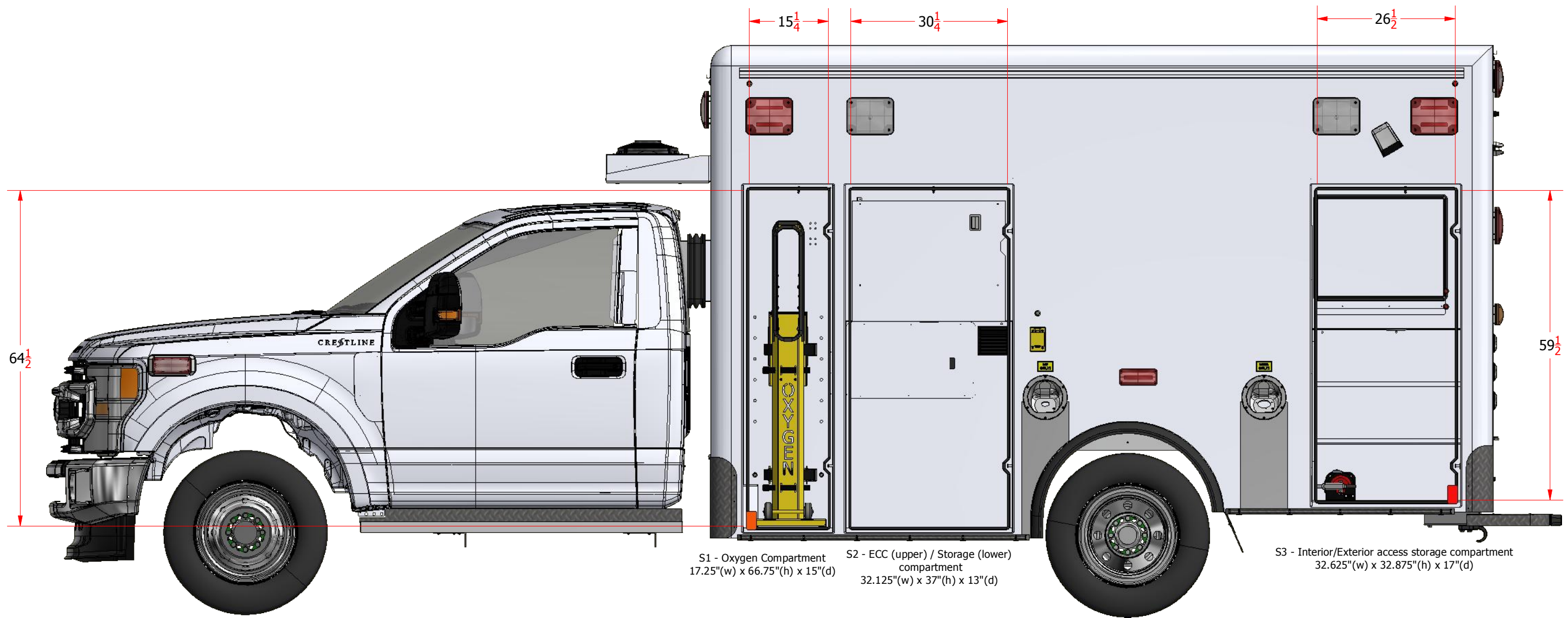
DATE:	VIEW:	curbside exterior	CRESTLINE
MODEL:	DESCRIPTION:	CCL 150	
PAGE:	CUSTOMER:	REV	FILENAME:
8 OF 22		0	AMB2020011



ALL INFORMATION SHOWN IS SUBJECT TO CHANGE. FOR REPRESENTATIVE OR VISUAL PURPOSES ONLY. NOT INTENDED TO BE USED AS A MANUFACTURING DRAWING.

ALL INFORMATION ON THIS DRAWING IS CONFIDENTIAL. ALL COPIES OF THIS DOCUMENT MUST BE RETURNED OR DESTROYED UPON REQUEST BY CRESTLINE COACH.

DATE:	VIEW:	CRESTLINE	
MODEL:	CCL 150	DESCRIPTION:	CCL150 TALL ROOF, FORD F-350, TYPE 1, 169" WB
PAGE:	9 OF 22	CUSTOMER:	REV 0 FILENAME: AMB2020011



S1 - Oxygen Compartment
17.25"(w) x 66.75"(h) x 15"(d)

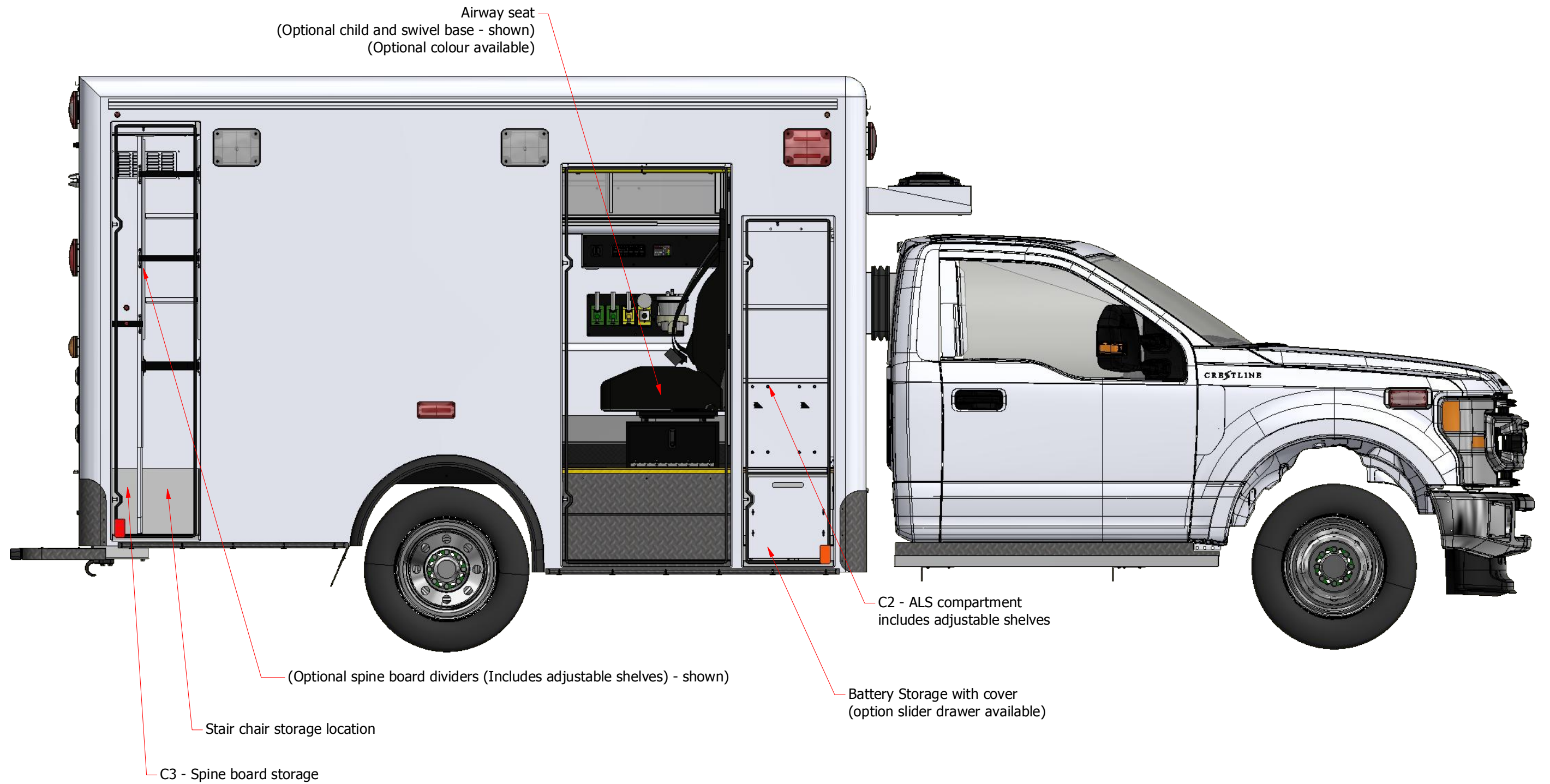
S2 - ECC (upper) / Storage (lower)
compartment
32.125"(w) x 37"(h) x 13"(d)

S3 - Interior/Exterior access storage compartment
32.625"(w) x 32.875"(h) x 17"(d)

ALL INFORMATION SHOWN IS SUBJECT TO CHANGE. FOR REPRESENTATIVE OR VISUAL PURPOSES ONLY. NOT INTENDED TO BE USED AS A MANUFACTURING DRAWING.			
ALL INFORMATION ON THIS DRAWING IS CONFIDENTIAL. ALL COPIES OF THIS DOCUMENT MUST BE RETURNED OR DESTROYED UPON REQUEST BY CRESTLINE COACH.			
DATE:	VIEW:	CRESTLINE [®]	
MODEL:	DESCRIPTION:		
	CCL 150	CCL150 TALL ROOF, FORD F-350, TYPE 1, 169" WB	
PAGE:	CUSTOMER:	REV	FILENAME:
10 OF 22		0	AMB2020011



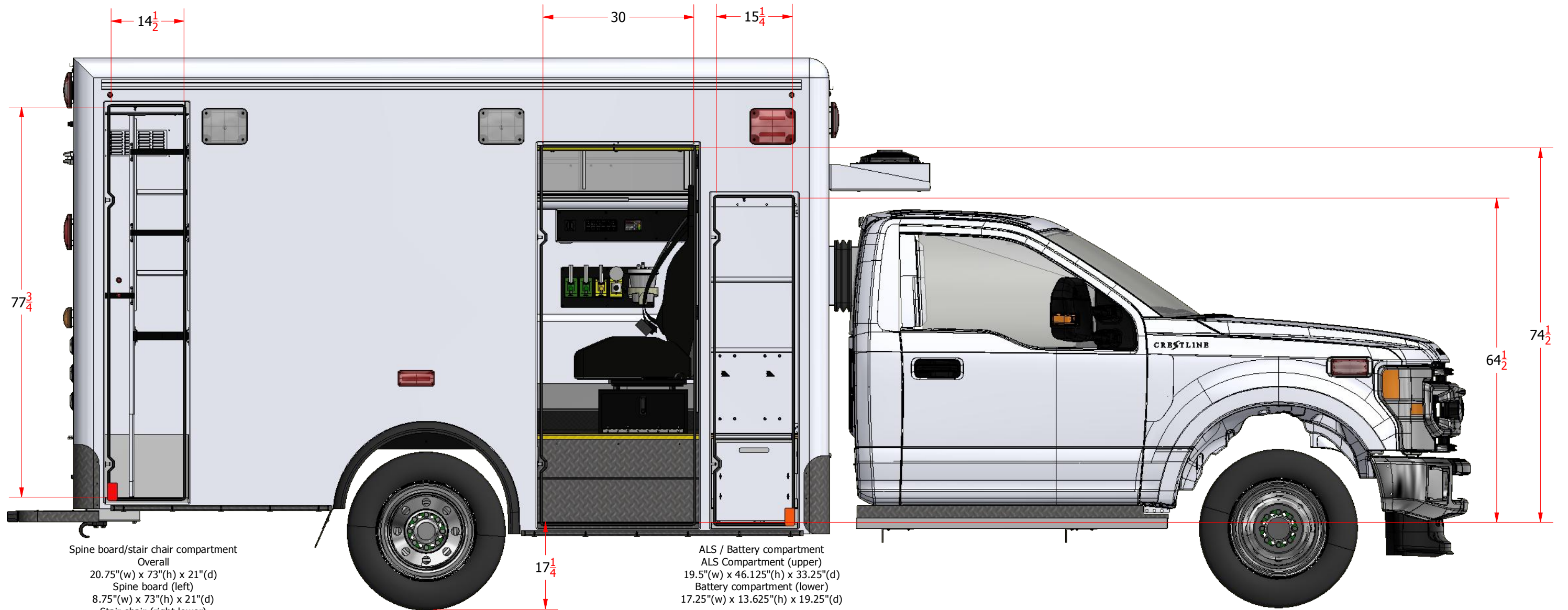
ALL INFORMATION SHOWN IS SUBJECT TO CHANGE. FOR REPRESENTATIVE OR VISUAL PURPOSES ONLY. NOT INTENDED TO BE USED AS A MANUFACTURING DRAWING.			
ALL INFORMATION ON THIS DRAWING IS CONFIDENTIAL. ALL COPIES OF THIS DOCUMENT MUST BE RETURNED OR DESTROYED UPON REQUEST BY CRESTLINE COACH.			
DATE:	VIEW:	CRESTLINE	
MODEL:	CCL 150	DESCRIPTION:	CCL150 TALL ROOF, FORD F-350, TYPE 1, 169" WB
PAGE:	CUSTOMER:	REV	FILENAME:
11 OF 22		0	AMB2020011



ALL INFORMATION SHOWN IS SUBJECT TO CHANGE. FOR REPRESENTATIVE OR VISUAL PURPOSES ONLY. NOT INTENDED TO BE USED AS A MANUFACTURING DRAWING.

ALL INFORMATION ON THIS DRAWING IS CONFIDENTIAL. ALL COPIES OF THIS DOCUMENT MUST BE RETURNED OR DESTROYED UPON REQUEST BY CRESTLINE COACH.

DATE:	VIEW:	CRESTLINE	
MODEL:	CCL 150	DESCRIPTION:	CCL150 TALL ROOF, FORD F-350, TYPE 1, 169" WB
PAGE:	CUSTOMER:	REV	FILENAME:
12 OF 22		0	AMB2020011



ALL INFORMATION SHOWN IS SUBJECT TO CHANGE. FOR REPRESENTATIVE OR VISUAL PURPOSES ONLY. NOT INTENDED TO BE USED AS A MANUFACTURING DRAWING.			
ALL INFORMATION ON THIS DRAWING IS CONFIDENTIAL. ALL COPIES OF THIS DOCUMENT MUST BE RETURNED OR DESTROYED UPON REQUEST BY CRESTLINE COACH.			
DATE:	VIEW:	CRESTLINE	
MODEL:	CCL 150	DESCRIPTION:	CCL150 TALL ROOF, FORD F-350, TYPE 1, 169" WB
PAGE:	CUSTOMER:	REV	FILENAME:
13 OF 22		0	AMB2020011

4

4

3

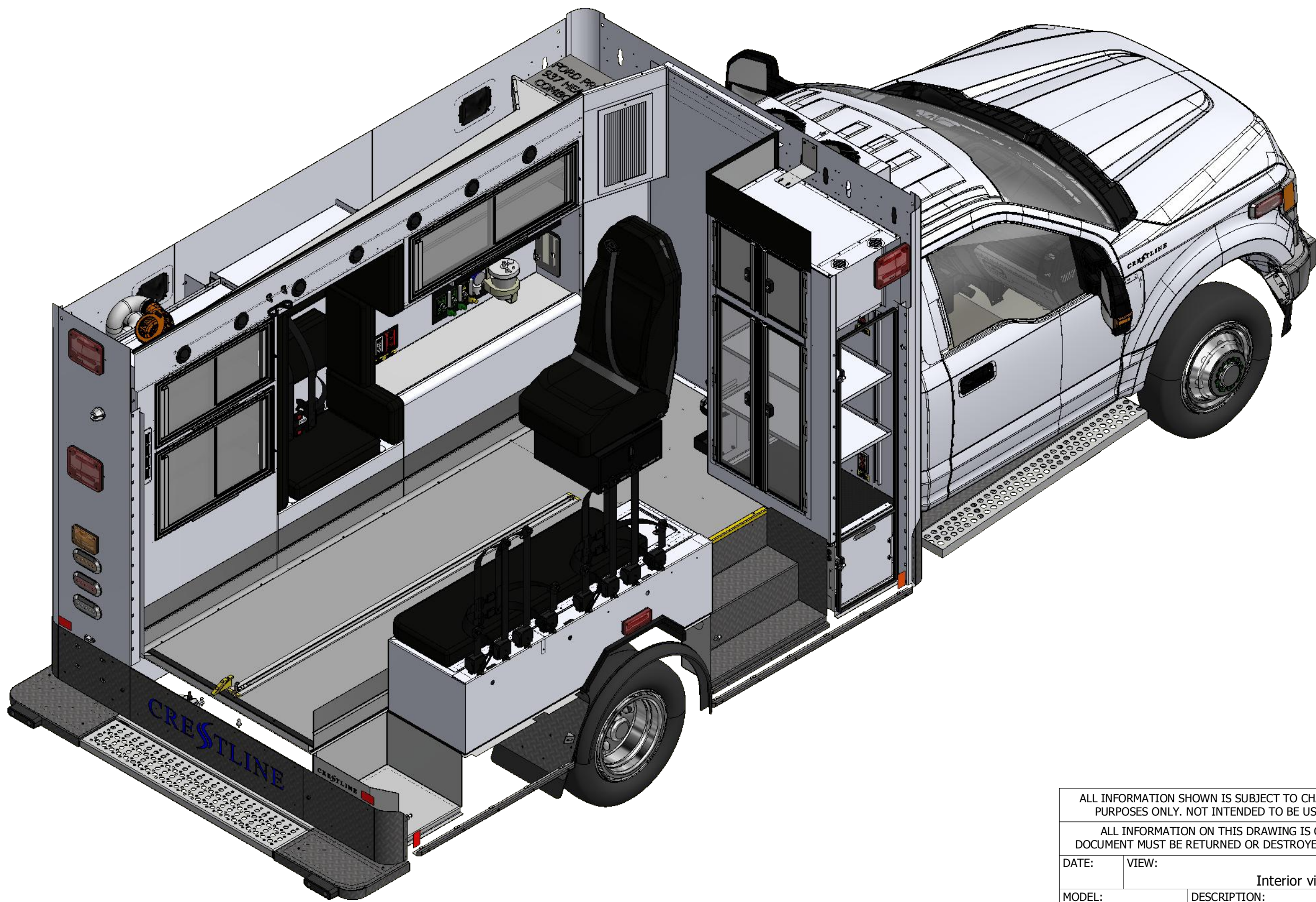
3

2

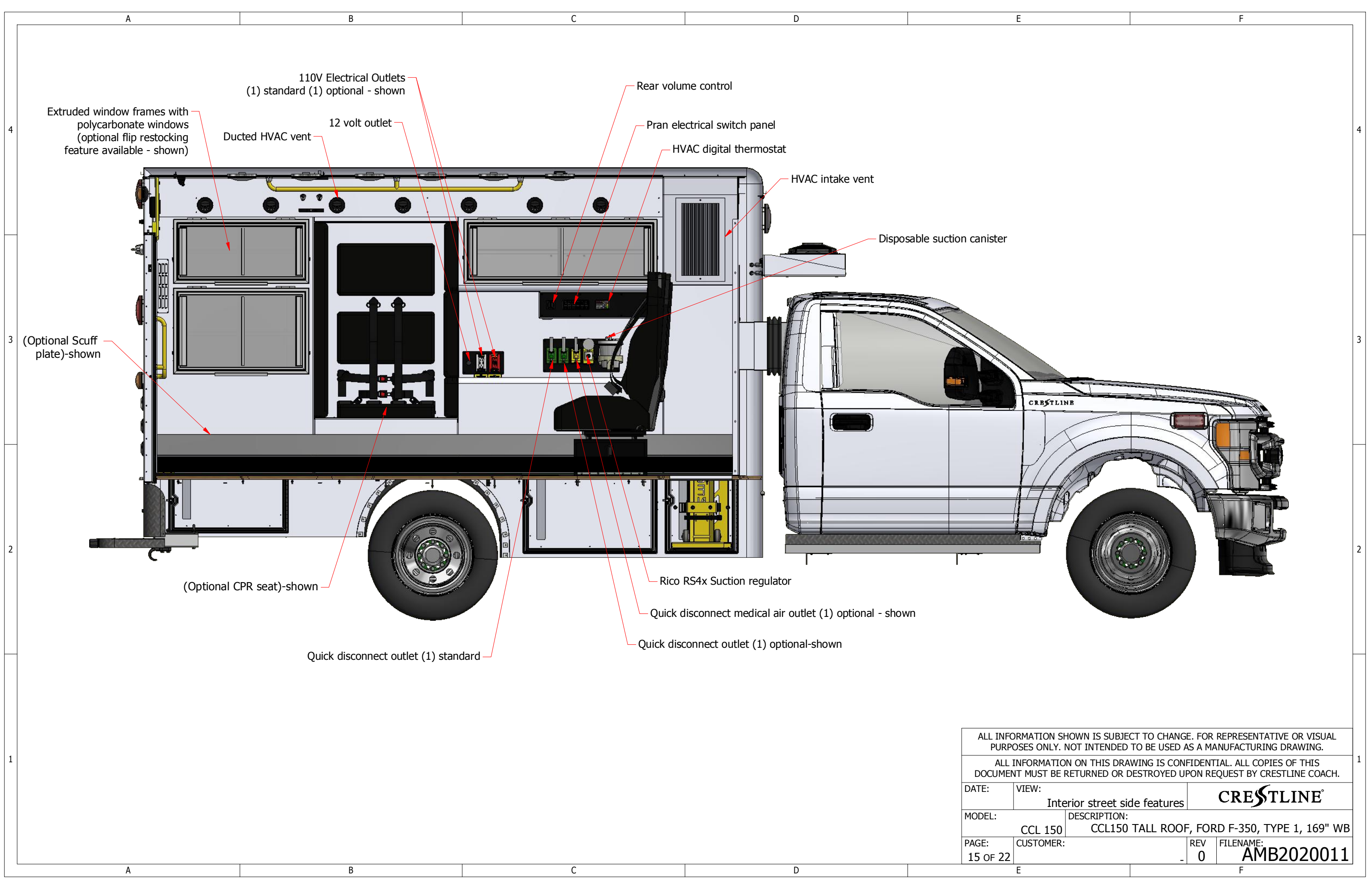
2

1

1



ALL INFORMATION SHOWN IS SUBJECT TO CHANGE. FOR REPRESENTATIVE OR VISUAL PURPOSES ONLY. NOT INTENDED TO BE USED AS A MANUFACTURING DRAWING.			
ALL INFORMATION ON THIS DRAWING IS CONFIDENTIAL. ALL COPIES OF THIS DOCUMENT MUST BE RETURNED OR DESTROYED UPON REQUEST BY CRESTLINE COACH.			
DATE:	VIEW:	Interior view	CRESTLINE
MODEL:	CCL 150	DESCRIPTION:	CCL150 TALL ROOF, FORD F-350, TYPE 1, 169" WB
PAGE:	CUSTOMER:	REV	FILENAME:
14 OF 22		- 0	AMB2020011



110V Electrical Outlets
(1) standard (1) optional - shown

Rear volume control

Extruded window frames with polycarbonate windows (optional flip restocking feature available - shown)

Ducted HVAC vent

12 volt outlet

Pran electrical switch panel

HVAC digital thermostat

HVAC intake vent

Disposable suction canister

(Optional Scuff plate)-shown

(Optional CPR seat)-shown

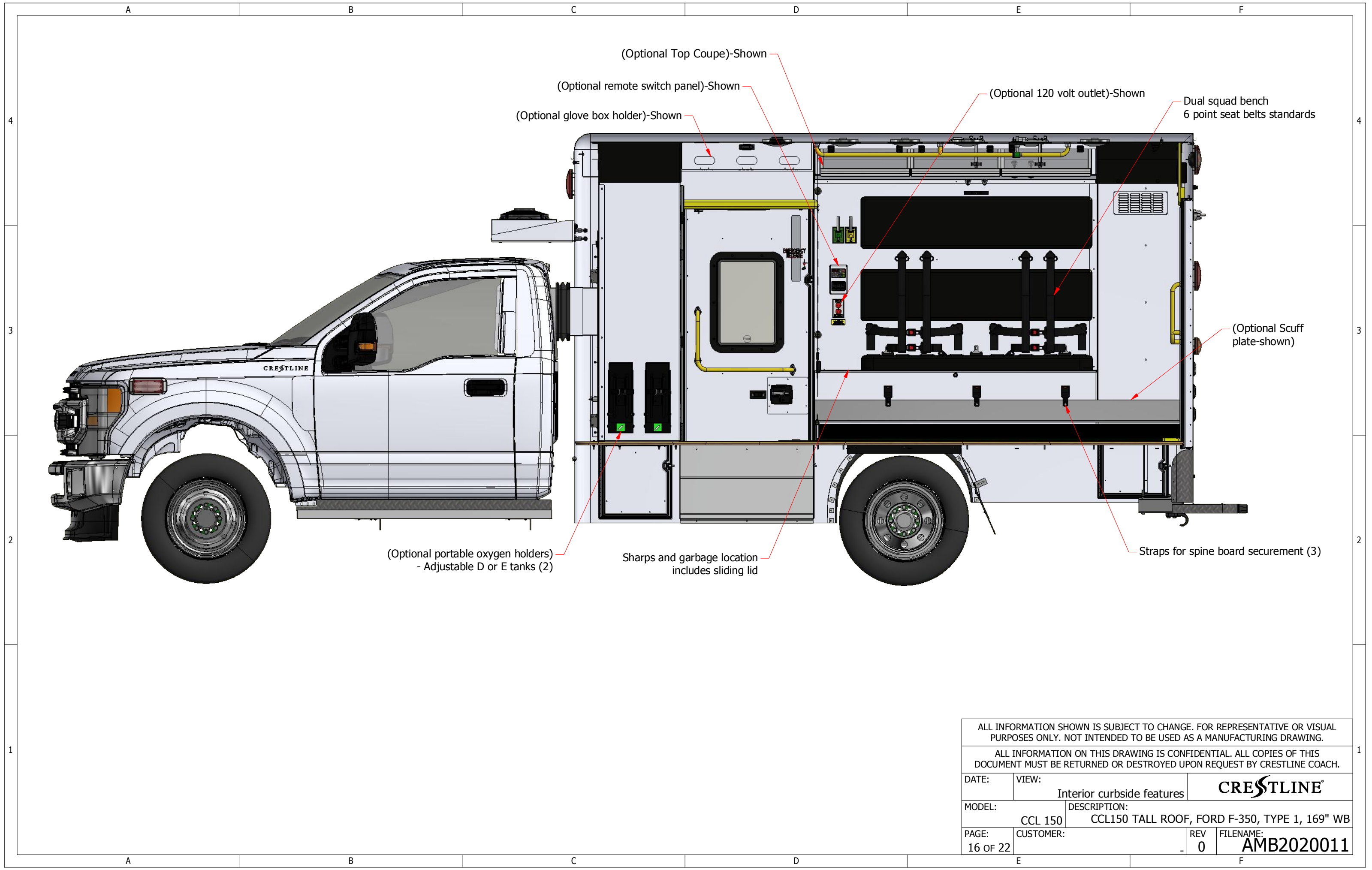
Rico RS4x Suction regulator

Quick disconnect medical air outlet (1) optional - shown

Quick disconnect outlet (1) standard

Quick disconnect outlet (1) optional-shown

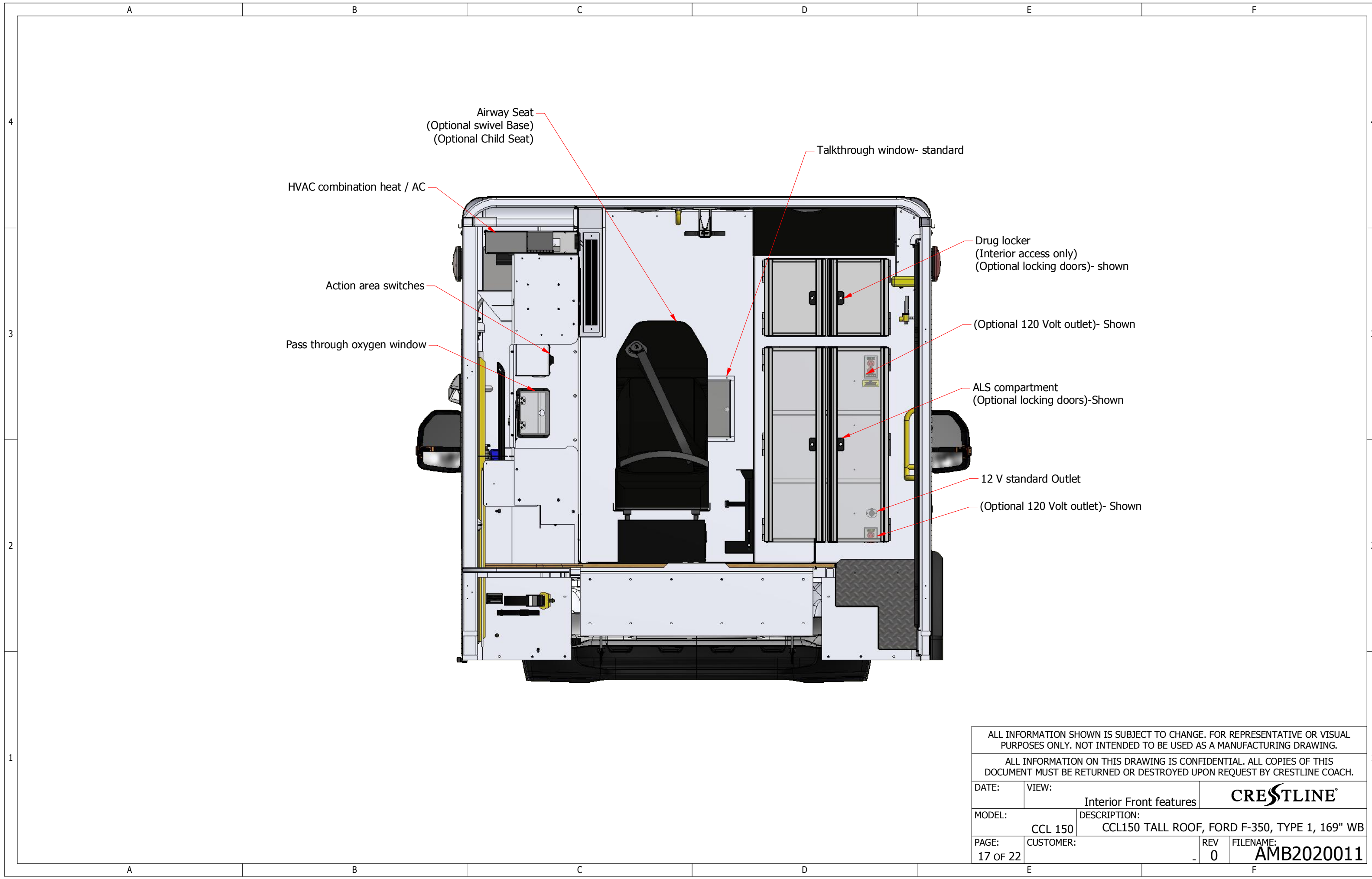
ALL INFORMATION SHOWN IS SUBJECT TO CHANGE. FOR REPRESENTATIVE OR VISUAL PURPOSES ONLY. NOT INTENDED TO BE USED AS A MANUFACTURING DRAWING.			
ALL INFORMATION ON THIS DRAWING IS CONFIDENTIAL. ALL COPIES OF THIS DOCUMENT MUST BE RETURNED OR DESTROYED UPON REQUEST BY CRESTLINE COACH.			
DATE:	VIEW:	CRESTLINE Interior street side features	
MODEL:	DESCRIPTION:		
CCL 150	CCL150 TALL ROOF, FORD F-350, TYPE 1, 169" WB	PAGE:	CUSTOMER:
15 OF 22		REV	FILENAME:
		0	AMB2020011



ALL INFORMATION SHOWN IS SUBJECT TO CHANGE. FOR REPRESENTATIVE OR VISUAL PURPOSES ONLY. NOT INTENDED TO BE USED AS A MANUFACTURING DRAWING.

ALL INFORMATION ON THIS DRAWING IS CONFIDENTIAL. ALL COPIES OF THIS DOCUMENT MUST BE RETURNED OR DESTROYED UPON REQUEST BY CRESTLINE COACH.

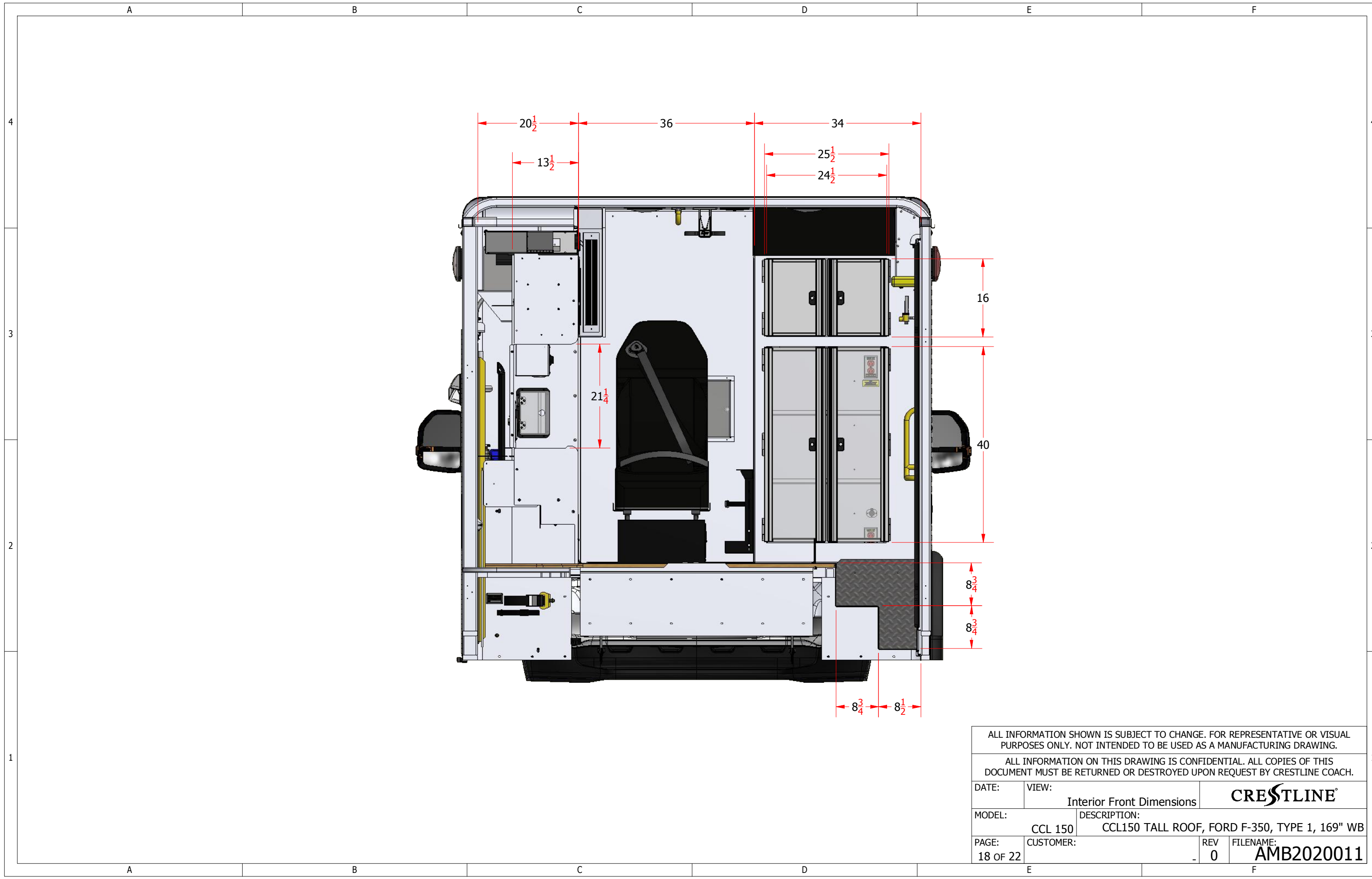
DATE:	VIEW:	CRESTLINE Interior curbside features
MODEL:	DESCRIPTION:	
CCL 150	CCL150 TALL ROOF, FORD F-350, TYPE 1, 169" WB	
PAGE:	CUSTOMER:	REV
16 OF 22		0
		FILENAME:
		AMB2020011



ALL INFORMATION SHOWN IS SUBJECT TO CHANGE. FOR REPRESENTATIVE OR VISUAL PURPOSES ONLY. NOT INTENDED TO BE USED AS A MANUFACTURING DRAWING.

ALL INFORMATION ON THIS DRAWING IS CONFIDENTIAL. ALL COPIES OF THIS DOCUMENT MUST BE RETURNED OR DESTROYED UPON REQUEST BY CRESTLINE COACH.

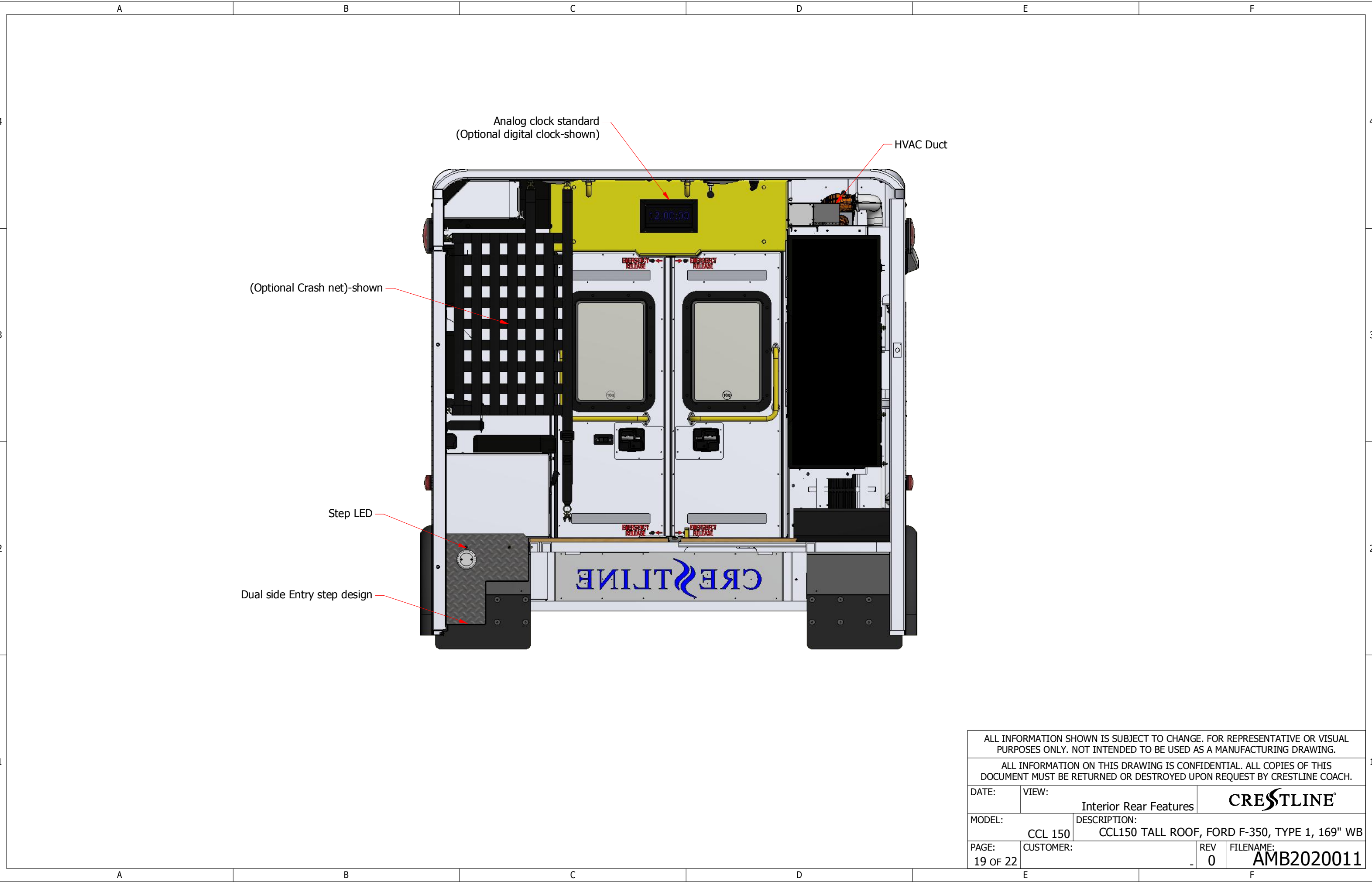
DATE:	VIEW:	Interior Front features	CRESTLINE
MODEL:	CCL 150	DESCRIPTION:	CCL150 TALL ROOF, FORD F-350, TYPE 1, 169" WB
PAGE:	CUSTOMER:	REV	FILENAME:
17 OF 22		0	AMB2020011



ALL INFORMATION SHOWN IS SUBJECT TO CHANGE. FOR REPRESENTATIVE OR VISUAL PURPOSES ONLY. NOT INTENDED TO BE USED AS A MANUFACTURING DRAWING.

ALL INFORMATION ON THIS DRAWING IS CONFIDENTIAL. ALL COPIES OF THIS DOCUMENT MUST BE RETURNED OR DESTROYED UPON REQUEST BY CRESTLINE COACH.

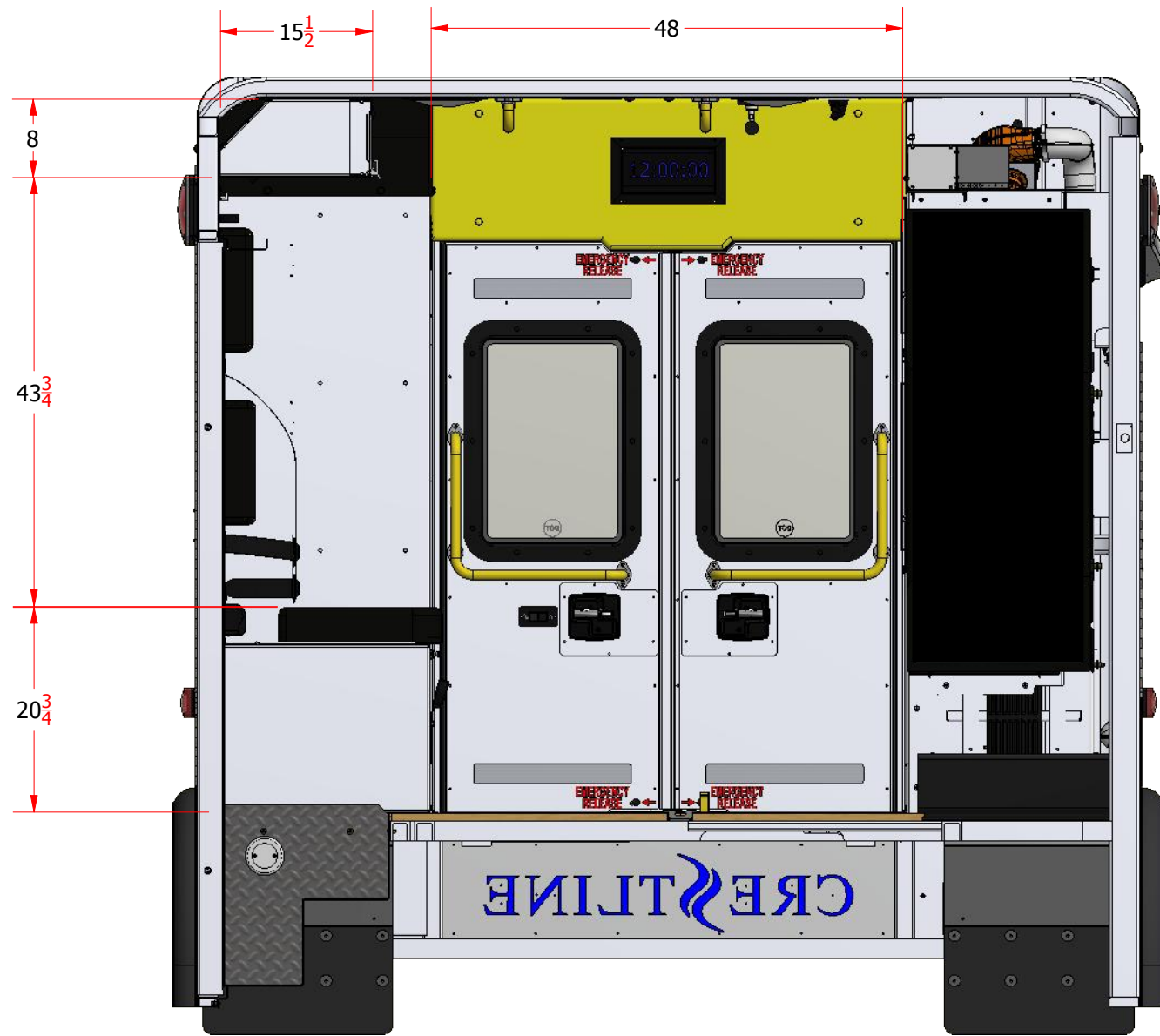
DATE:	VIEW:	CRESTLINE [®]
Interior Front Dimensions		
MODEL:	DESCRIPTION:	
CCL 150	CCL150 TALL ROOF, FORD F-350, TYPE 1, 169" WB	
PAGE:	CUSTOMER:	REV
18 OF 22		0
		FILENAME:
		AMB2020011



ALL INFORMATION SHOWN IS SUBJECT TO CHANGE. FOR REPRESENTATIVE OR VISUAL PURPOSES ONLY. NOT INTENDED TO BE USED AS A MANUFACTURING DRAWING.

ALL INFORMATION ON THIS DRAWING IS CONFIDENTIAL. ALL COPIES OF THIS DOCUMENT MUST BE RETURNED OR DESTROYED UPON REQUEST BY CRESTLINE COACH.

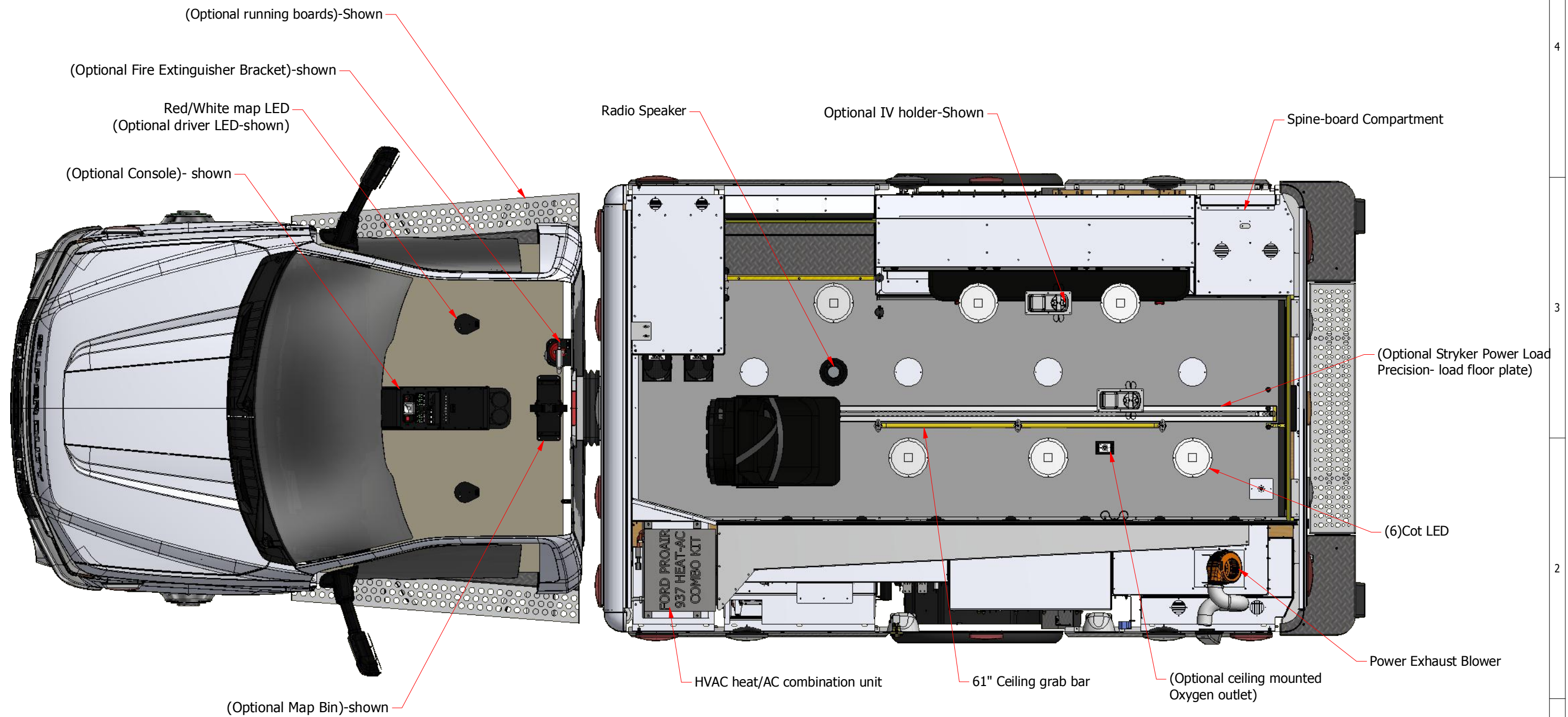
DATE:	VIEW:	Interior Rear Features	CRESTLINE
MODEL:	CCL 150	DESCRIPTION:	CCL150 TALL ROOF, FORD F-350, TYPE 1, 169" WB
PAGE:	19 OF 22	CUSTOMER:	REV 0 FILENAME: AMB2020011



ALL INFORMATION SHOWN IS SUBJECT TO CHANGE. FOR REPRESENTATIVE OR VISUAL PURPOSES ONLY. NOT INTENDED TO BE USED AS A MANUFACTURING DRAWING.

ALL INFORMATION ON THIS DRAWING IS CONFIDENTIAL. ALL COPIES OF THIS DOCUMENT MUST BE RETURNED OR DESTROYED UPON REQUEST BY CRESTLINE COACH.

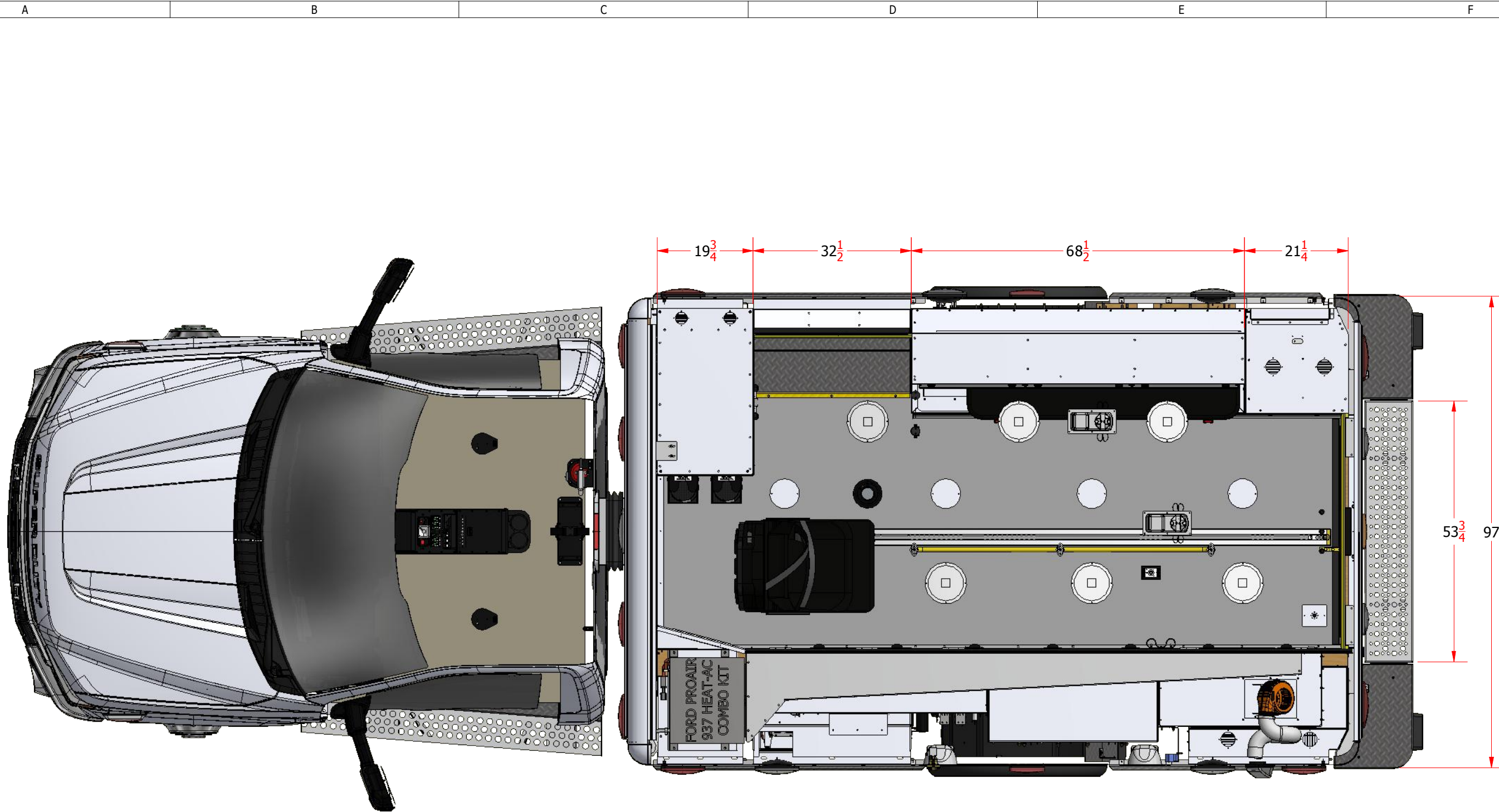
DATE:	VIEW:	Interior Rear Dimensions	CRESTLINE
MODEL:	CCL 150	DESCRIPTION:	CCL150 TALL ROOF, FORD F-350, TYPE 1, 169" WB
PAGE:	CUSTOMER:	REV	FILENAME:
20 OF 22		0	AMB2020011



ALL INFORMATION SHOWN IS SUBJECT TO CHANGE. FOR REPRESENTATIVE OR VISUAL PURPOSES ONLY. NOT INTENDED TO BE USED AS A MANUFACTURING DRAWING.

ALL INFORMATION ON THIS DRAWING IS CONFIDENTIAL. ALL COPIES OF THIS DOCUMENT MUST BE RETURNED OR DESTROYED UPON REQUEST BY CRESTLINE COACH.

DATE:	VIEW:	Interior Top features	CRESTLINE
MODEL:	CCL 150	DESCRIPTION: CCL150 TALL ROOF, FORD F-350, TYPE 1, 169" WB	
PAGE: 21 OF 22	CUSTOMER:	REV 0	FILENAME: AMB2020011



ALL INFORMATION SHOWN IS SUBJECT TO CHANGE. FOR REPRESENTATIVE OR VISUAL PURPOSES ONLY. NOT INTENDED TO BE USED AS A MANUFACTURING DRAWING.

ALL INFORMATION ON THIS DRAWING IS CONFIDENTIAL. ALL COPIES OF THIS DOCUMENT MUST BE RETURNED OR DESTROYED UPON REQUEST BY CRESTLINE COACH.

DATE:	VIEW:	Interior Top dimensions	CRESTLINE [®]
MODEL:	CCL 150	DESCRIPTION: CCL150 TALL ROOF, FORD F-350, TYPE 1, 169" WB	
PAGE:	CUSTOMER:	REV	FILENAME:
22 OF 22		0	AMB2020011